



Sedia impilabile monoblocco, in polipropilene rinforzato fibra vetro e stampata ad iniezione con gas moulding nei colori:  
- bianco-grigio-verde-tortora-rosso-lava-turchese-lilla-giallo.

Monobloc stackable chair, in polypropylene reinforced with fiberglass, moulded through gas injection process, available in the colors:  
- white- grey-green-dove-red-lava-turquoise-lilac-yellow.

Chaise empilable monobloc en polypropylène renforcée en fibre de verre. Moulage par injection de gaz, disponible dans les couleurs:  
- blanc-gris-vert-tourterelle-rouge-lave-turquoise-lila-jaune.

Monoblockstuhl stapelbar aus Glasfaser verstärktes Polypropylen, hergestellt im Einspritzverfahren in "Air-Moulding" Technologie. In den Farben:  
- weiss-grau-grün-taube-rot-lava-türkis-lila-gelb.

Silla apilable en polipropileno monobloque reforzado con fibras de vidrio y moldeada por inyección con moldeado de gas en los colores:  
- blanco-gris-verde-arena-rojo-lava-turquesa-lila-amarillo.



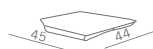
Impilabile  
(s/carrello n. 8)  
(c/carrello n. 12)

Stackable  
(w/o trolley nr. 8)  
(w/trolley nr. 12)



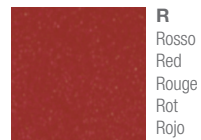
Con cuscino removibile sfoderabile

With detachable and removable cushion



**C**

Crema (bianco)  
Cream (White)  
Crème (blanc)  
Creme (Weiss)  
Crema (blanco)



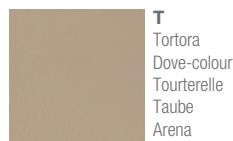
**R**

Rosso  
Red  
Rouge  
Rot  
Rojo



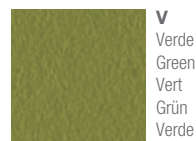
**P**

Turchese  
Turquoise  
Turquoise  
Türkis  
Turquesa



**T**

Tortora  
Dove-colour  
Tourterelle  
Taube  
Arena



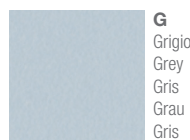
**V**

Verde  
Green  
Vert  
Grün  
Verde



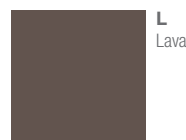
**F**

Lilla  
Lilac  
Lila  
Lila  
Lila



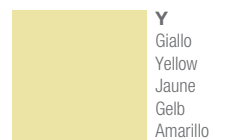
**G**

Grigio  
Grey  
Gris  
Grau  
Gris



**L**

Lava



**Y**

Giallo  
Yellow  
Jaune  
Gelb  
Amarillo