

arco

Ontvang Uw Exclusieve Aanbieding!

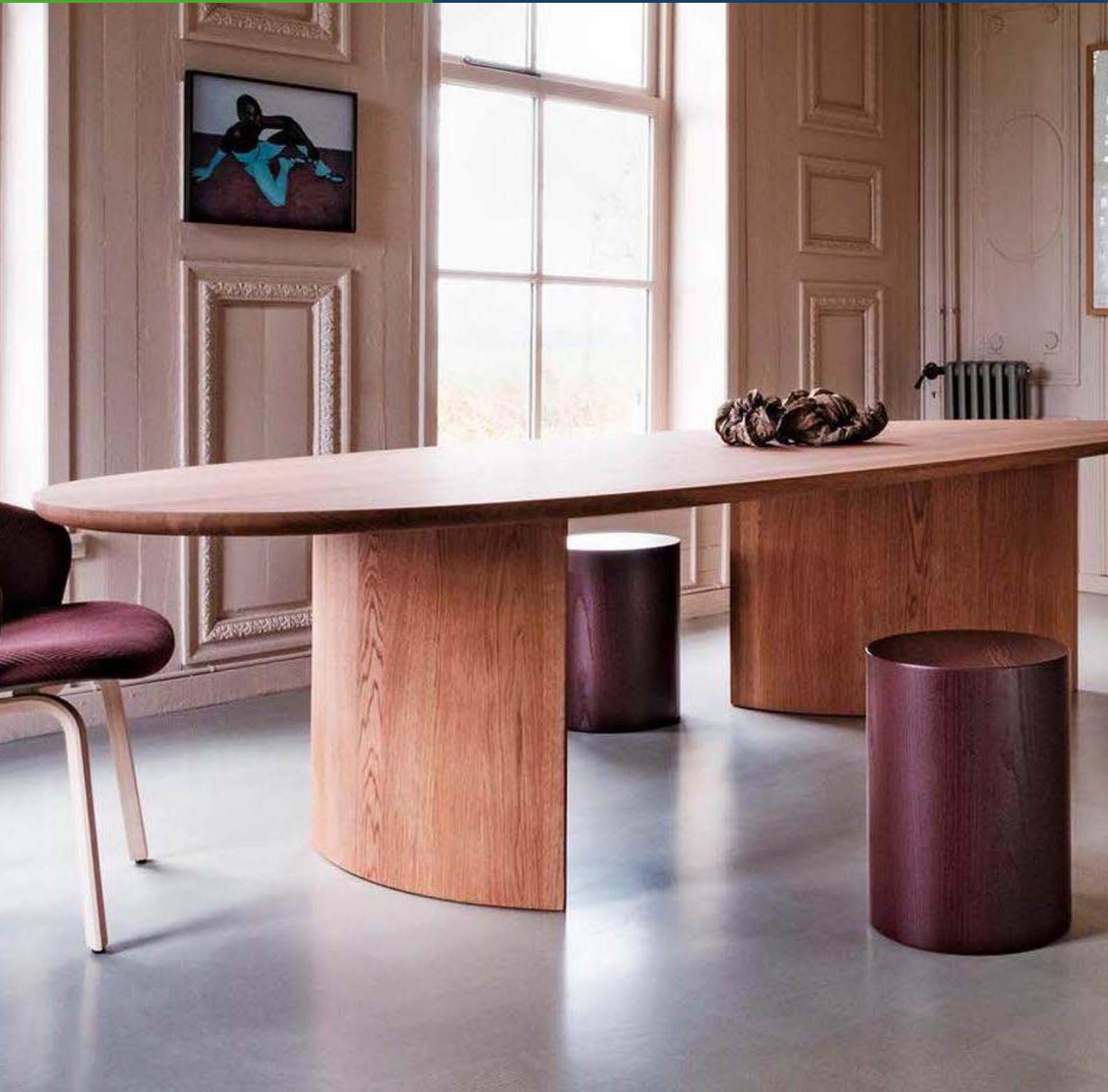
We vermelden hier geen korting, maar die willen wij u wel graag geven. Daarvoor hebben wij uw gegevens nodig. Vul hier het [contactformulier](#) in en ontvang direct uw aanbieding van ons.

Kleuren, materialen en afwerkingen

Arco meubelen. Vraag hier om een aanbieding - offerte.

In de showrooms hebben wij alle stoffen en kleur opties voor de [Arco](#) Meubelen beschikbaar.

Neem contact met ons op voor een bezoek en vrijblijvend advies, zodat wij voldoende tijd voor u reserveren.



Wood

Wood is a natural material and no two trees are the same. Each piece of furniture is a natural reflection of the specific wood it is made from and has its own unique wood grain. Therefore, despite our careful selection, there may be variations in texture or colour. Please allow for localised light or dark discolouration, which often only becomes apparent after processing.

It is important for wood to maintain its moisture content. To prevent the wood from ‘moving’ (shrinking or expanding), we recommend keeping the relative humidity in the room as constant as possible (around 60%). The temperature should also be kept as constant as possible.

Wood discolours under the influence of (sun)light and takes on its final colour after a few months. In the case of extendable tables, the inserts should therefore also be exposed to light during these months. They can then be stored (if they are separate inserts) or retracted (integrated inserts).

As wood discolours when exposed to (sun)light and takes on its final colour after a few months, re-ordered furniture will never have the same colour.

Solid wood (Arco premium quality)

Our solid wooden table tops are composed of solid wooden strips of varying widths which are glued together. The tables can be finished with mat-natural finish (hereafter N-finish), project finish (hereafter P-finish) or with oil. Natural characteristics of the wood such as knots, deformations, black spots etc. are inevitable. With premium quality solid wood, open defects must never be visible, (however, they may for instance be found on the underside of the table top). Solid wood is extremely sensitive to fluctuations in temperature and humidity, which could cause the wood to “work” and create e.g. little cracks in the course of time.

Solid wood (Local Wood)

Local Wood is wood from the region around the Arco factory in Winterswijk. Local Wood does not hide any ‘imperfections’ in the wood. Knots are often part of the table top and give it its own character. These knots are never open, they are closed.

Duramas (semi-solid wood)

Duramas is composed of a thin layer of premium quality solid wood, which is glued onto the top and bottom of a supporting core panel (e.g. poplar), which provides for an extremely stable sandwich construction. The advantage of Duramas is that high quality wood is sparingly used, while the top layer is still strong enough to be sanded and oiled like solid wood. Duramas is sensitive to fluctuations in temperature and humidity which could cause the wood to “work” and create little cracks in the course of time.

Veneer

Veneer is a thin layer of wood glued onto a core panel. The advantage of veneer is that it is real wood, with the corresponding warm appearance and tactility, but it hardly ‘works’ (shrinking and expansion). Arco uses a special method where the veneer sheets are mirrored so that the patterns in the wood optically continue, thereby creating an even wood image.

Finishes

Stain colors

Our oak furniture (including solid wood, duramas and veneer) can be stained in different colors. Staining is a technique where the color is applied to the wood while the wood structure remains clearly visible. Stained wood can be finished with N-finish or P-finish. Finishing with oil is not possible.

Smoked oak

Oak contains tannin, the same substance that makes red wine and black tea ‘dry’. This substance reacts to the ammonia vapours that are dispersed in the drying chamber during the drying process. Due to this the wood colors “through and through”. The tanin concentration determines the color, which may vary from light brown, to a warm deepbrown and sometimes almost black. This concentration is influenced by the soil composition and the living environment of the tree and can therefore differ greatly per trunk and even among different sections of the same trunk. Even though the color is selected during the production process, it is impossible to guarantee that everything will stay in the same color. In other words, color differences always occur in smoked oak.

Furthermore, we would like to inform that the smoked oak we use for our tables is no premium quality solid oak. For that reason natural characteristics such as little knots or black spots, deformations, etc. might be visible. Smoked oak can be finished with N- or P-lacquer and oil (only solid).

Brushed oak (only on solid wood)

Brushing creates a relief between softer and harder growth rings. The depth is influenced by the wood’s natural properties: the density, flat or quarter sawn and the structure. There will always be variations in ‘depth’ and ‘coarseness’. The grooves will be deeper in the ‘softer’ wood parts. Cracks cannot be avoided and will hence remain visible. The table top can become somewhat uneven due to the brushing, thereby creating a risk of splinters. When a product from our Local Wood collection will be brushed, whitish spots, knots, differences in color and all other natural properties of ‘Local Wood’ will remain visible. Brushed oak can be finished with an N- or P-lacquer.

Oil finish for solid wood and duramas

Oiled solid wooden and duramas tables show the natural radiance of the wood even better than solid wooden tables with N- or P-finish. Tables with an oil finish are somewhat more sensitive to stains and moisture however, and therefore require some maintenance. Arco solid wooden and duramas tables are treated with a high quality oil, which is only made from ecologically responsible materials. The oil nourishes and protects the wood.

Lacquer finishes for veneer, solid wood, duramas and color lacquer

We only use finishings which meet the highest quality standards. You can choose from two different finishes: N- or P-finish. The two different finishes provide excellent protection for the wood.

N-finish gives the wood an unmistakable matte appearance.

P-finish gives the wood a slight gloss. The P-finish less sensitive to forming stains, and is therefore easier to maintain than N-finish.

Lacquer colors

A wide range of our furniture can be lacquered in various colors, whereby the color is applied on the material. Lacquer colors are not possible for solid wooden and duramas tables.

In addition to the standard P-lacquer finish, N-lacquer is also available for dark colours.

Laminates

HPL Fenix® NTM

Nano technology is used for FENIX® NTM surfaces. The surface is obtained through the next generation of resins, developed by Arpa Industriale. With this technology, FENIX NTM® has access to advanced features such as an extremely mat surface which is soft to touch, protects against fingerprints and provides thermal recovery from minor scratches. This innovative material also has specific properties that facilitate cleaning and no special maintenance is required. FENIX® NTM is resistant to fungus, has improved anti-bacterial properties and is resistant to rubbing, scratching and abrasion.

Forbo Furniture Linoleum

Furniture Linoleum is a bio-based, natural material produced in the Netherlands. Furniture Linoleum does not leave fingerprints, is antistatic and has a pleasant writing surface.

The material is 'alive', develops a patina with use (just like leather) and has a number of associated characteristics. These include small marks, dents or shiny streaks.

Metals

Aluminum

Aluminium is a material that is easy to cast, which means that an aluminium base can be moulded and finished into the desired shape. Aluminium requires little maintenance, it provides a great shape freedom and it is a lightweight material.

Artisanal cast aluminum

For the production of the base of the Joist and Trestle, Arco has chosen for a artisanal cast base (sand casting and Coquille casting). In this production method, aluminum is scooped from a crucible in a molten state and then poured into a mold (made of sand or metal).

Due to the rapid solidification in the mold, a fine-grained structure is formed, similar to the texture of an orange peel. Characteristic of this technique is the presence of small visible holes on the surface. It is also possible for shallow streaks or small bumps to occur on the surface. These characteristics are inherent to this casting process.

Finish: Epoxy fine texture

Epoxy is a thermo-hardening plastic material which adheres to virtually any surface. Epoxy is also abrasion resistant and requires little maintenance. Applying epoxy to metal provides a very durable surface treatment and offers a wide range of colors. We have various epoxy colors available in our collection.

Finish: Aluminum

We have aluminium basis available both in brushed and polished versions. Optically, brushed aluminium provides the product with a softer look than polished aluminium.

Finish: Mat chrome

Chrome is a resistant surface material that resists scratches well. In case of a base in chrome, a layer of chrome is applied to metal.

Concrete

Concrete is composed of the binding agent cement, mixed with water and aggregates such as gravel and sand. By combining the correct amounts, a stone-like and durable material is created which can be shaped as required through a casting process. Concrete has a robust appearance and it is an ideal material for creating a stable table.

Textile

Our seating furniture is available in many fabrics from different manufacturers, but we closely collaborate with Kvadrat, De Ploeg, Gabriel en Camira.

For the complete and current fabric list visit

Leather

Leather groups b and d

Aniline leather is provided with a protective layer, but is not completely covered. With this method of finishing, the natural properties of the leather are retained as much as possible. In use, the leather will obtain its own character, which is mainly determined by the typical gloss (patina) that leather obtains after a period of time.

Semi-aniline and dyed leather

These types of leather are not only colored, but they also have a topcoat that partially covers the natural properties. This type of finishing creates a user-friendly surface.

For the current leather collection visit our website:

oak: neutrals (solid, semi-solid, veneer)



1000 oak pure



1100 oak natural



1101 oak white



1200 oak grey



1201 oak smoke



1202 oak morado



1300 oak black



1301 oak carbon

oak: colors (solid, semi-solid, veneer)



1400 oak terra



1401 oak burgundy



1500 oak moss



1600 oak ocean



1700 oak dijon

oak: neutrals (solid, semi-solid)



1000 oak pure (oil)



1100 oak natural (oil)



1101 oak white (oil)

oak: smoked (solid, semi-solid)



1000 oak smoked pure

walnut (solid, semi-solid, veneer)



1000 walnut pure

wood finish (solid, semi-solid)



brushed

Please note that the printed samples only serve as indication of the color.

color lacquer: neutrals

5100 white
(GN.02.88/RAL9010)

5101 beige (F2.05.65)



5200 grey (FN.02.77)

5201 quartz grey
(F7.05.37/RAL7039)

5202 mud (F2.10.50)



5203 silt (F2.10.40)

5301 black
(UN.00.07/RAL 9005)5703 Deep Brown
(C2.04.06/RL8022)

color lacquer: yellow, green, red, blue color groups



5400 clay (C8.20.40)



5401 red (C4.60.30)



5402 burnt red (C4.35.15)

5403 wine red
(B1.16.12/RAL3007)

5500 mute green (H8.07.47)



5501 emerald green (L0.20.40)



5502 moss green (G0.20.30)

5503 deep green
(J5.16.15/RAL6007)

5600 slate blue (P0.03.55)



5601 petrol blue (R0.30.30)



5602 prussian blue (T0.10.30)

5603 deep blue
(U1.11.08/RAL5004)

5700 lime (G0.55.80)



5701 ochre (E8.50.50)



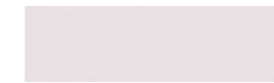
5702 mustard (E4.30.40)

5703 deep brown
(C2.04.06/RAL8022)

epoxy fine texture: neutrals



5100 white (RAL9010)



5200 grey (FN.02.77)



5201 quartz grey (RAL7039)



5204 grey beige (RAL1019)



5300 black grey (RAL7021)



5301 black (RAL9005)

epoxy fine texture: colors



5400 clay (C8.20.40)



5403 wine red (RAL3007)



5404 rust (custom Arco color)



5503 deep green (RAL6007)



5600 slate blue (RAL7042)



5603 deep blue (RAL5004)



5604 ultramarine (RAL5002)



5702 mustard (E4.30.40)



5703 deep brown (RAL8022)

Please note that the printed samples only serve as indication of the color.

concrete



Natural

metal



Mat chrome

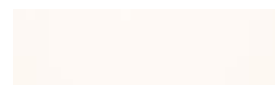


Aluminum



Stainless steel

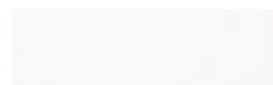
laminates: Fenix



7100 Bianco Male (0029)



7101 Bianco Kos (0032)



7102 Bianco Alaska (0030)



7200 Grigio Londra (0718)



7201 Grigio Antrim (0752)



7202 Beige Arizona (0748)



7203 Grigio Efeso (0725)



7204 Beige Luxor (0719)



7300 Nero Ingo (0720)



7301 Grigio Aragona (0793)



7400 Viola Orissa (0790)



7401 Rosso Jaipur (0751)



7402 Rosso Namib (0789)



7403 Rosso Askja (0770)



7500 Verde Comodoro (0750)



7501 Verde Brac (0773)



7502 Verde Kitami (0794)



7600 Blu Fes (0754)



7601 Blu Shaba (0792)



7602 Azzurro Naxos (0771)



7603 Grigio Bromo (0724)



7700 Cacao Orinoco (0749)



7701 Castoro Ottawa (0717)



7702 Giallo Evora (0791)

laminates: Forbo Furniture Linoleum



8101 Pearl (4157)



8301 Pebble (4175)



8302 Mushroom (4176)



8303 Vapour (4177)



8304 Ash (4132)



8305 Pewter (4155)



8306 Iron (4178)



8307 Charcoal (4166)



8308 Nero (4023)



8401 Powder (4185)



8402 Clay (4001)



8403 Salsa (4164)



8405 Burgundy (4154)



8406 Mauve (4172)



8407 Orange Blast (4186)



8501 Spring Green (4182)



8502 Pistachio (4183)



8503 Olive (4184)



8504 Conifer (4174)



8506 Aquavert (4180)



8601 Midnight Blue (4181)



8602 Smokey Blue (4179)



8701 Leather (4002)



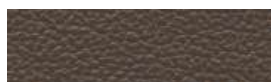
8702 Walnut (4003)

There may be slight colour variations from sample to sample and product to product. Furniture linoleum has certain characteristics that customers should be aware of. Arco cannot be held responsible for these inherent material characteristics. Therefore, Arco cannot accept any complaints in this respect.

Er kunnen lichte kleurvariaties zijn van monster tot monster en van product tot product. Furniture Linoleum heeft bepaalde kenmerken waarvan klanten zich bewust moeten zijn. Arco kan niet verantwoordelijk worden gehouden voor deze intrinsieke materiaal kenmerken. Klachten die hierop betrekking hebben kan Arco derhalve niet accepteren.

Von Muster zu Muster und von Produkt zu Produkt sind leichte Farbabweichungen möglich. Furniture Linoleum verfügt über bestimmte Merkmale, über die der Kunde informiert sein sollte. Arco übernimmt keine Verantwortung für diese Materialeigenschaften und diesbezügliche Beschwerden.

leather



a.MO



d.NG



b.EG



a.ZW



b.HZ



b.HB



b.CL



b.AC



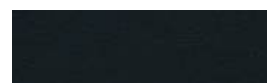
a.BR



c.JD



c.AB



c.BL



d.SK

Our seating furniture is available in our own leather collection. We also work with the following collections from Ohmann 1012 (leather group C), 1010 (leather group D) and for the Close, Laze and Re-volve also with Elmosoft (leather group D). Ohmann leather is possible with the purchase of at least 4 chairs or 1 bench in the same version.

Onze stoelen en banken zijn leverbaar in onze eigen leercollectie, maar wij werken ook met de volgende collecties van Ohmann 1012 (leergroep C), 1010 (leergroep D) en voor de Close, Laze en Re-volve ook met Elmosoft (leergroep D). Ohmann leer kan bij afname van tenminste 4 stoelen/1 bank) in dezelfde uitvoering.

Unsere Sitzmöbel sind in unserer eigenen Lederkollektion lieferbar. Wir arbeiten auch mit den folgenden Kollektionen von Ohmann () 1012 (Ledergruppe C), 1010 (Ledergruppe D) und bei Close, Laze und Re-volve auch mit Elmosoft (Ledergruppe D). Ohmann-Leder ist möglich bei einer Bestellung von mindestens 4 Stühlen oder 1 Bank in der gleichen Ausführung.

textile

Our seating furniture is available in many fabrics from different manufacturers. Among others, we work with with Kvadrat , De Ploeg , Gabriel en Camira. The fabric group classification can be found in the fabric list at

Onze stoelen en banken zijn leverbaar in vele stoffen van verschillende fabrikanten. Wij werken onder andere met Kvadrat, De Ploeg, Gabriel en Camira . De stofgroep indeling is te vinden in de stoffenlijst

Unsere Sitzmöbel sind in zahlreichen Stoffen von verschiedenen Herstellern lieferbar. Wir arbeiten unter anderem mit Kvadrat , De Ploeg , Gabriel (www.gabriel.dk/en/) und Camira. Die Klassifizierung der Stoffgruppen finden Sie in der Stoffliste

<u>Name</u>	<u>Group</u>	<u>Supplier</u>
Agency	On request	Maharam
Allure	2	Aristide
Alto	2	De Ploeg
Apparel	5	Febrik by Kvadrat
Arda	5	Febrik by Kvadrat
Atlantic	1	Gabriël
Atlas	4	Kvadrat
Atom	On request	Kvadrat
Autumn	Basic	Kvadrat
Avalon 2	5	Kvadrat (Sahco)
Balder	On request	Kvadrat
Baru	On request	Kvadrat (Sahco)
Beck	4	Maharam
Bergen	4	De Ploeg
Birk	4	De Ploeg
Blazer	2	Camira
Bobby	2	Aristide
Bold	5	De Ploeg
Boris	2	Aristide
Broken Twill Weave	3	Kvadrat
Brutus	2	Aristide
Byram	On request	Kvadrat
Canvas	3	Kvadrat
Capture	5	Gabriël
Celia	2	Blue Kompany
Cesar	2	Aristide
Chili	2	Gabriël
Clara	4	Kvadrat
Clay	4	Kvadrat (Sahco)
Coda	5	Kvadrat
Comfort+	On request	Gabriël
Compound	2	Maharam
Cotton Velvet	On request	Maharam
Credo	5	Rohi
Crisp	4	Gabriël
Cura	1	Gabriël
Dama	2	Blue Kompany
Daniel	Basic	Aristide
Divina	5	Kvadrat
Divina MD	4	Kvadrat
Divina Melange	4	Kvadrat
Drop	On request	Febrik by Kvadrat
Ecriture	5	Kvadrat (Sahco)
Elle	On request	Kvadrat (Sahco)

Fabrics

08-04-2025

<u>Name</u>	<u>Group</u>	<u>Supplier</u>
Michael	Basic	Aristide
Mida	1	De Ploeg
Mizmaze	4	Febrik by Kvadrat
Mode	1	Maharam
Molly	4	Kvadrat
Monza	3	De Ploeg
Monza Melange	3	De Ploeg
Mood	4	Gabriël
Mosa	5	De Ploeg
Mosaic	On request	Febrik by Kvadrat
Moss	3	De Ploeg
Moss	3	Kvadrat (Sahco)
Nara	On request	Kvadrat (Sahco)
Naveli	2	Kvadrat
Netsu	4	Aristide
Nevada	5	De Ploeg
Nico	2	Maharam
Noma	2	Gabriël
Novum	5	Rohi
Nubis	3	De Ploeg
Nuvola	4	De Ploeg
Olive	3	De Ploeg
Omega	4	Gabriël
Opera	5	Rohi
Oregon	4	De Ploeg
Osino	2	De Ploeg
Oxbox	5	Maharam
Panama	5	De Ploeg
Panama +	5	De Ploeg
Petra	5	Maharam
Phlox	On request	Kvadrat
Pine	1	De Ploeg
Planum	5	Febrik by Kvadrat
Plecto	5	Febrik by Kvadrat
Ploegwool	4	De Ploeg
Polder	4	De Ploeg
Prairie	3	De Ploeg
Proof	5	Kvadrat (Sahco)
Raas	5	Kvadrat
Range	On request	Maharam
Razzle Dazzle	On request	Febrik by Kvadrat
Re-wool	3	Kvadrat
Reflect	2	Kvadrat
Relate	2	Kvadrat

<u>Name</u>	<u>Group</u>	<u>Supplier</u>
Remix	1	Kvadrat
Reno	1	De Ploeg
Revive	4	Kvadrat
Rhythm	3	Gabriël
Rivet	Basic	Camira
Rowan	3	Maharam
Ruig	3	De Ploeg
Runner	2	Gabriël
Sabi	4	Kvadrat
Safire	4	Kvadrat (Sahco)
Sand	4	De Ploeg
Savak	5	Gabriël
Savanna	3	Kvadrat
Select	3	Gabriël
Serra	3	De Ploeg
Shake	On request	Maharam (Bert-Jan Pot)
Sisu	5	Kvadrat
Sonar	On request	Kvadrat
Sport	2	Kvadrat
Sprinkles	On request	Febrik by Kvadrat
Steelcut	4	Kvadrat
Steelcut Beat	2	Kvadrat
Steelcut Quartet	2	Kvadrat
Steelcut Trio	2	Kvadrat
Step	1	Gabriël
Step Melange	2	Gabriël
Steppe	4	De Ploeg
Still	4	Kvadrat
Strand	1	De Ploeg
Sunniva	5	Kvadrat
Suunta	4	Kvadrat
Swing	2	Gabriël
Taro	4	De Ploeg
Teddy	5	Aristide
Tempo	4	Maharam
Tempt	2	Gabriël
Tonica	3	Kvadrat
Tonus	4	Kvadrat
Triangle	On request	Febrik by Kvadrat
Tweed	5	Bute
Twill Weave	5	Kvadrat
Twinwool	4	De Ploeg
Twist	On request	Maharam (Bert-Jan Pot)
Umbra	3	De Ploeg

<u>Name</u>	<u>Group</u>	<u>Supplier</u>
Uniform Melange	5	Febrik by Kvadrat
Urban	Basic	Camira
Vanir	4	Kvadrat
Vidar	5	Kvadrat
Vivid	1	De Ploeg
William	2	Aristide
Zero	4	Kvadrat (Sahco)

The pattern of a fabric can influence the upholstery. Not every quality can be used for every product. Fabrics with stretch are more suited for round shapes. Please take this into consideration when advising your client.

Het patroon van een stof kan de stoffering beïnvloeden. Niet iedere stof kan even mooi en goed verwerkt worden. Ronde vormen kunnen beter gestoffeerd worden met stoffen met meer rek. Bij de stofkeuze moet dus rekening gehouden worden met het model van de stoel/bank.

Maintenance instructions & Warranty

General

Before using, we recommend you to clean your furniture with a damp cloth (for example with ZO Alles Schoon from the maintenance kit delivered with the table) to remove any remaining dust residues. It is recommended to also clean the underside of the legs. Make sure that the carpet is completely dry before placing the furniture on a cleaned carpet.

Hard (scratches!), hot (shrinkage!) or wet (stains!) objects must never be placed directly on the table, as it could cause irremovable damage. It is therefore recommended to always use coasters.

Some of our products have removable parts; should there arise some space in the joints as a result of dryness or use, simply tighten the bolts and screws of the construction.

We also like to point out to you again the fact that wood is a natural material. For example, the final colour of the wood develops under the influence of (sun)light during use (ask your dealer for explanation and advice). For an equal colouring, it is advisable to also place the extra leaves in the same light during the first months. Very important for the condition of the wood is to maintain the humidity of the air as constant as possible (approx. 60%) in order to avoid drying out of the wood (shrinkage!).

Wood

Wood (veneer, solid, duramas) with P-lacquer and furniture with colour lacquer

Daily cleaning with a cotton cloth. Remove stains with a damp cloth or with ZO Alles Schoon from maintenance kit delivered with the table. More persistent stains can be removed using ZO Keuken Schoon. This is degreasing kitchen cleaner which can be ordered on www.zoschoon.nl.

When the cleaning agent can soak for a while you will get the best result. You can spray in the table and wipe away with the delivered cloth. Always clean the table thoroughly with clean water to remove the detergent used (however, do not over-wet the surface). Finally, dry the table top thoroughly. Always work in the direction of the grain. Never use wax, wax-containing substances or abrasive agents.

Wood (veneer, solid, duramas) with mat-natural finish (N-finish)

Daily cleaning with a cotton cloth. Important: N-finish is more sensitive to grease than P-finish. This finish therefore requires a little more attention as to daily maintenance. Remove grease stains immediately with a moist cloth or with ZO Alles Schoon from the delivered maintenance kit delivered with the table. More persistent stains can be removed using ZO Keuken Schoon. This is a degreasing kitchen cleaner which can be ordered on www.zoschoon.nl.

When the cleaning agent can soak for a while you will get the best result. You can spray in the table and wipe away with the delivered cloth. Always clean the table thoroughly with clean water to remove the detergent used (however, do not over-wet the surface). Finally, dry the table top thoroughly.

Important: liquids spilled on the surface should be cleaned up immediately or within 5 to 10 minutes at most! Pollen (e.g. from flowers) must be carefully removed using adhesive tape. Never rub the pollen! Pollen and stains of marker pens cannot be removed. We also wish to draw attention to the presence of plastic protective caps under certain items (e.g. lamps, bowls, phones, laptops) as some pigments in the rubber could cause spots in the matnatural lacquer. These stains cannot be removed afterwards. To prevent this, always put felt under the rubber feet.

Solid wood and duramas with a transparent oil finish

For daily maintenance it is sufficient to clean the table with a dry cloth or lukewarm water if necessary. We recommend removing spilt liquids immediately. Treat the table regularly with oil (twice a year on average) in order to preserve the warm, natural glow of the wood and to provide the wood with the best possible protection against the effects of substances such as liquids. We supply a special maintenance kit together with an oiled table, including a bottle of oil (apply a thin layer of oil on a clean, dry table, distribute well and polish with a dry cloth). You can also use a good quality teak oil (see the packaging or product documentation for instructions). Treat your table regularly with oil to provide the wood with proper care and protection, thereby promoting the longevity of your table. You can easily remove light scratches and stains yourself. The special maintenance kit also contains a ball of steel wool to lightly sand the table top. It is important to sand the entire table top (not only the location of the stain or scratch), and always work in the direction of the grain. After sanding, treat the table with oil or teak oil. Avoid using caustic or abrasive cleaning agents.

Solid wood and duramas with a white oil finish

For daily maintenance it is sufficient to clean the table with a dry cloth or lukewarm water if necessary. We recommend removing spilt liquids immediately. To protect the wood against scratches and the influence of substances such as liquids, the table should be treated a few times a year with white oil. A bottle of white oil is provided for this purpose. Apply a thin layer of oil, using a clean, lint-free cloth and allow it to soak for a few minutes. Use a clean cloth to wipe it away. Always try first on an unnoted area.

NB: Do not sand the table top.

Smoked oak

See maintenance for solid wood and duramas with the respective finish (N-, P-lacquer or oil (only solid)).

Brushed oak

See maintenance for solid wood and duramas with the respective lacquer finish (N- or P-lacquer). However, dirt and moisture can remain in the 'seams/grooves', which can work their way into the wood. It is therefore advisable to quickly remove moisture and dirt.

Laminates

HPL Fenix NTM®

For daily maintenance it is sufficient to clean the surface with a damp cloth with warm water and mild detergent when necessary. We recommend using acetone for persistent dirt. Superficial scratches can be polished away by friction using a sponge. The warmth generated by rubbing closes the molecules, causing the scratches to disappear.

Forbo Furniture Linoleum

For daily maintenance, we recommend wiping the surface with a damp cloth using warm water. If necessary, use a mild detergent (ZO Schoon or a pH neutral soap). Always rinse thoroughly with clean water to remove any detergent used. Allow the surface to dry thoroughly.

Important: Immediately remove any spillages (including ink, coffee, tea, red wine). Prevent stubborn stains (rings) and scratches from sharp objects; use coasters with a soft underside for cups, glasses, vases, etc.

Metal

Finish: epoxy fine texture

Keep clean with a soft, lint-free, dry cloth and mild soapy water.

Finish: Chrome/stainless steel/stainless steel optic

It is sufficient to rub with a soft, dry cloth or to clean with mild soapy water. Moisten lightly with methylated spirit if necessary. Rub with acidfree vaseline once a year.

Finish: Casted aluminium

See chrome/stainless steel/stainless steel optic. Superficial scratches on a casted aluminium base can be removed with soapy water and Scotch Brite. Always work in the polishing direction.

Concrete

For maintenance instructions for concrete, see 'wood (veneer, solid, duramas) and color lacquer with P-finish'.

Textile

Keep the chair or sofa dust free by using a soft brush or vacuum cleaner (with a soft brush tip). Use a foaming agent to clean the furniture. It is difficult to provide instructions for removing stains in a nutshell, as it varies by type of stain and material. For treating stains, please see <http://www.james.eu/en/stain-removal>. The following applies for all agents: first try carefully on a spot that is not directly visible. Never use too excessive amounts of agents to prevent discoloration and to prevent damage to the foam layer.

Leather

Aniline leather (Leathers in group B and D)

For maintenance of this type of leather, regularly wipe down with a soft dry cloth. Aniline leather should be treated once a year with a leather protective agent for full-aniline leather. Please note: In the case of spills, dab the liquid immediately (do not rub). See for leather maintenance products.

Semi-aniline and dyed leather

For maintenance of this type of leather, regularly wipe down with a soft dry cloth, a soft brush or a moist cloth if necessary. It is recommended to treat this leather twice a year with a leather nourishing agent. See www.ohmannleather.com for leather maintenance products.

Warranty

Every piece of Arco furniture is produced from especially high quality materials and manufactured with the greatest care. The furniture only leaves our factory after careful quality control. If, despite of this, component or manufacturing faults occur, Arco will cover the cost of replacement or repair according to the following schedule:

Years of use contribution from Arco (in percentage of costs):

0-1	100 %
1-2	80 %
2-3	60 %
3-4	40 %
4-5	20 %

As condition we give that our maintenance advice has been used correctly. Furthermore, we are talking about normal, domestic use. Defects which are a result of injudicious use are excluded from warranty.

We also like to point out to you again the fact that wood is a natural material. For example, the final colour of the wood develops under the influence of light during use (ask you dealer for explanation and advice). For an equal colouring, it is advisable to also place the extra leaves in the same light during the first months. Very important for the condition of the wood is to maintain the humidity of the air as constant as possible (approx. 60%) in order to avoid drying out of the wood (shrinkage!).

A warranty claim to Arco has to be made within the warranty period, which starts on the day of delivery to the first owner or at the latest 30 days after delivery from Arco to the Arco dealer. Submitting a claim has to be done by presenting the invoice and the warranty certificate.

Specific exclusions

1. Normal wear and tear and damage are not covered by the warranty.
2. Damage due to incorrect use or wrong maintenance are excluded from warranty.
3. Indirect damage due to a possible defect, such as loss of profits, etc., are also excluded from warranty.
4. Repairs to the furniture and/or upholstery without written permission from Arco, are not covered by the warranty.
5. Chairs: the Arco warranty conditions do not apply for leather and fabric upholstery which are not from the standard Arco collection (e.g. customer own materials).