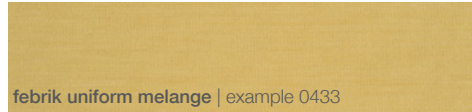
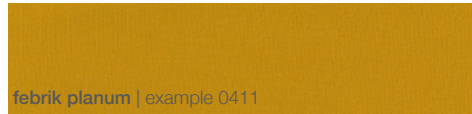


DUM



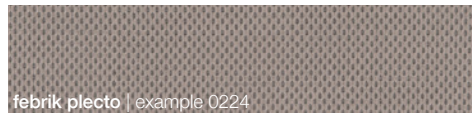
febrik uniform melange | example 0433



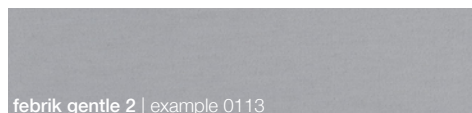
febrik planum | example 0411



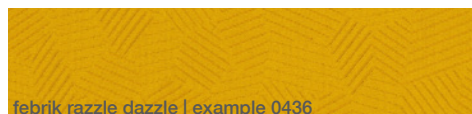
febrik nitto | example 0207



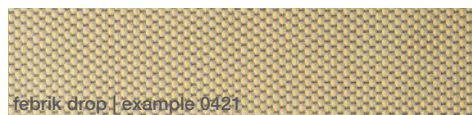
febrik plecto | example 0224



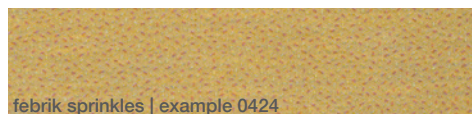
febrik gentle 2 | example 0113



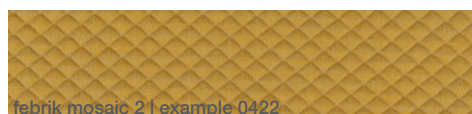
febrik razzle dazzle | example 0436



febrik drop | example 0421



febrik sprinkles | example 0424



febrik mosaic 2 | example 0422

upholstery knitted

name: Kvadrat Febrik Uniform Melange
material top: 75% wool 25% synthetics
weight / abrasion: 530 g/m² / >80.000 martindale
samples and colours: www.febrik.com

name: Kvadrat Febrik Planum
material top: 75% wool 25% synthetics
weight / abrasion: 425 g/m² / >100.000 martindale
samples and colours: www.febrik.com

name: Kvadrat Febrik Nitto
material top: 80% wool 20% synthetics
weight / abrasion: 400 g/m² / >100.000 martindale
samples and colours: www.febrik.com

name: Kvadrat Febrik Plecto
material top: 75% wool 25% synthetics
weight / abrasion: 455 g/m² / >50.000 martindale
samples and colours: www.febrik.com

name: Kvadrat Febrik Gentle 2
material top: 75% wool 25% synthetics
weight / abrasion: 580 g/m² / >90.000 martindale
samples and colours: www.febrik.com

name: Kvadrat Febrik Razzle Dazzle
material: 75% wool 25% synthetics
weight / abrasion: 600 g/m² / >80.000 martindale
samples and colours: www.febrik.com

name: Kvadrat Febrik Drop
material top: 75% wool 25% synthetics
weight / abrasion: 600 g/m² / >80.000 martindale
samples and colours: www.febrik.com

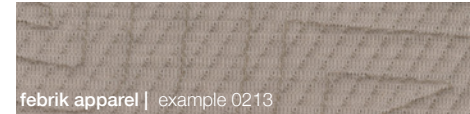
name: Kvadrat Febrik Sprinkles
material top: 75% wool 2% synthetics
weight / abrasion: 1070 g/m² / >80.000 martindale
samples and colours: www.febrik.com

name: Kvadrat Febrik Mosaic 2
material top: 75% wool 25% synthetics
weight / abrasion: 750 g/m² / >100.000 martindale
samples and colours: www.febrik.com

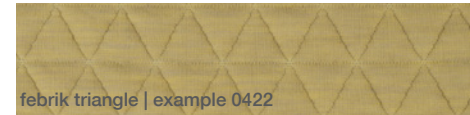
DUM



febrik husk | example 0454



febrik apparel | example 0213



febrik triangle | example 0422

name: Kvadrat Febrik Husk
material top: 75% wool 25% synthetics
weight / abrasion: 870 g/m² / >100.000 martindale
samples and colours: www.febrik.com

name: Kvadrat Febrik Apparel
material top: 75% wool 25% synthetics
weight / abrasion: 900 g/m² / >80.000 martindale
samples and colours: www.febrik.com

name: Kvadrat Febrik Triangle
material top: 75% wool 25% synthetics
weight / abrasion: 875 g/m² / >60.000 martindale
samples and colours: www.febrik.com

kvadrat divina 3 | example 0171

name: Kvadrat Divina 3
material: 100% wool
weigh / abrasion: 840 g/lin.m / >45.000 martindale
samples and colours: www.kvadrat.dk

kvadrat divina melange 2 | example 0120

name: Kvadrat Divina Melange 2
material: 100% wool
weigh / abrasion: 840 g/lin.m / >45.000 martindale
samples and colours: www.kvadrat.dk

kvadrat steelcut trio 3 | example 0446

name: Kvadrat Steelcut Trio 3
material: 90% wool 10% nylon
weigh / abrasion: 770 g/lin.m / >100.000 martindale
samples and colours: www.kvadrat.dk

kvadrat Jaali | example 0611

name: Kvadrat Jaali
material: 92% wool 8% nylon
weigh / abrasion: 520 g/lin.m / >80.000 martindale
samples and colours: www.kvadrat.dk

kvadrat tonus 4 | example 0440

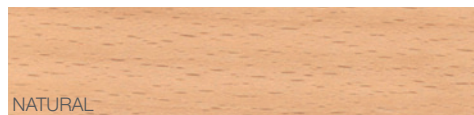
name: Kvadrat Tonus 4
material: 90% wool 10% helanca
weigh / abrasion: 665 g/lin.m / >100.000 martindale
samples and colours: www.kvadrat.dk

kvadrat hallingdal 65 | example 0407

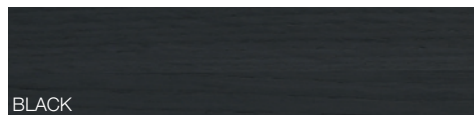
name: Kvadrat Hallingdal 65
material: 70% wool 30% viscose
weigh / abrasion: 795 g/lin.m / >100.000 martindale
samples and colours: www.kvadrat.dk

DUM

wood standard colours



NATURAL



BLACK

standard colours for beech veneer and solid wood
samples: DUM

DUM

wood stain



stain honey yellow



stain zinc yellow



stain wine red



stain classic pink



stain black blue



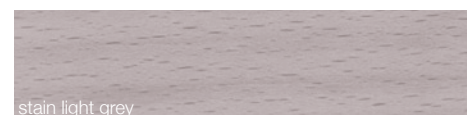
stain leaf green



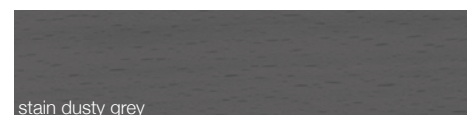
stain black green



stain traffic green



stain light grey



stain dusty grey

stain colours for beech veneer and solid wood
[not yet available for upholstered furniture]
samples: DUM
specials: custom stain colours are available with NCS
colours as a basis. see the pricelist for condtions.

DUM

wood colour laquers

lacquer colours for beech veneer and solid wood
samples: DUM
specials: custom colour laquers are available based on RAL colour. see the pricelist for conditions.

colour lacquer honey yellow

colour lacquer zinc yellow

colour lacquer wine red

colour lacquer classic pink

colour lacquer black blue

colour lacquer leaf green

colour lacquer black green

colour lacquer traffic green

colour lacquer light grey

colour lacquer dusty grey

DUM

stripes

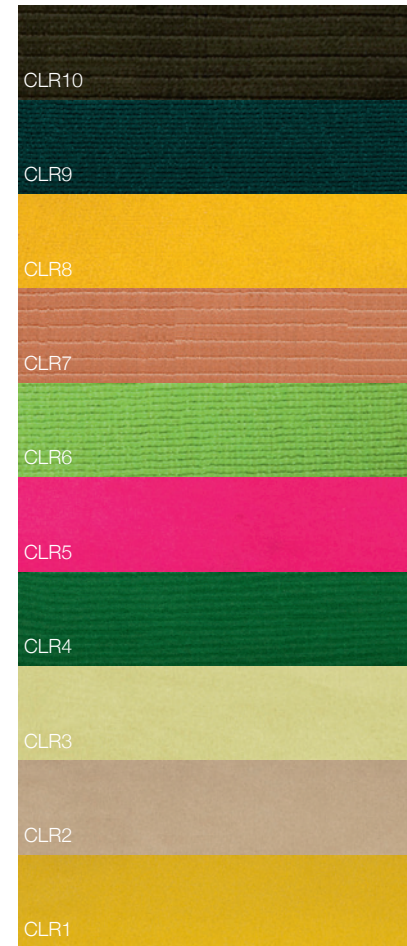


CLR10 CLR9 CLR8 CLR7 CLR6 CLR5 CLR4 CLR3 CLR2 CLR1 x 1.5m

description:
 carpet system based on 10 colour stripes of 49cm wide and maximum 800cm long.

design:
 fransje killaars & dumoffice, 2012

material:
 100% pure new zealand wool, anti-slip backing, blind finished with cotton border.



any size (max 800cm)

stripes

measurements:

colours x 49cm x 800cm (max)

colours and description (CLR):

CLR10	quadro fine 2-ply	brown	9,1 mm high
CLR9	carole 15M	teal	15 mm high
CLR8	marillo 23	orange	5,9 mm high
CLR7	quadro fine 2-ply	skin	9,1 mm high
CLR6	carole 15M	radium	15 mm high
CLR5	wolmoquette 15M	shock-pink	16,6 mm high
CLR4	marillo 23	green	5,9 mm high
CLR3	wolmoquette 15M	napels	16,6 mm high
CLR2	wolmoquette 28	white	9,6 mm high
CLR1	wolmoquette 28	yellow	9,6 mm high

DUM

uni hpl

table top for beech connect / beech basics
Duropal HPL-XPRESS uni colour with coordinated
ABS band
samples: www.pfleiderer.com



HPL | Duropal XPRESS UNI colours

DUM

arpa fenix hpl

table top for beech connect / beech basics
arpa fenix nanotech black with coordinated band
mat, soft, anti-fingerprint, micro scratch thermo healing
samples: www.fenixntm.com

ARPA | arpa fenix nero ±RAL 9011

care and maintenance / disclaimer

Our products are manufactured from materials of the highest quality. We check the goods before they leave our factory, so the product quality can be guaranteed.

Wood

Every tree is different and equally, every piece of wood has its own unique structure and color, no two parts are ever the same. Other characteristics of these naturally growing materials are knots and structural variations. Our products may contain small, healthy, closed knots that have developed naturally in the growing wood. This limits excessive rejection and thus prevents material waste.

Wood is a natural material that breathes and reacts to the surrounding environment. This may cause color differences and/or micro cracks in the varnish or wood structure of the product. The colors and dimensions of wood might change as a natural reaction to environmental conditions such as humidity and temperature. These changes may lead to warping of the wood. The tolerance for wood is \pm 3-5 mm. To minimize this, we recommend using the products in a room with a constant humidity between 50% and 60%.

Prevent wood from being exposed to direct sunlight or other heat sources (fireplace, stove, radiator, etc.). This could lead to discoloration and/or cracks etc. of the wood.

Lacquered or stained wood products can have variable varnish absorption, stain absorption and/or surface structure due to differences in the wood structure and knots. Deviations cannot be avoided and will therefore not be accepted as ground for complaints.

For banded wooden furniture, we use solid wood that has not been treated with solvents or chemicals. Consequently, there may be color differences between the various parts. This is a natural feature of steam-banded wood and will therefore not be accepted as ground for complaints.

Veneer is a thin layer of wood and like solid wood, it is a natural product with all the associated properties. No two veneer sheets are identical. It is not possible to prevent deviations and will therefore not be accepted as ground for complaints.

Use on tables always coasters with felt to prevent damage and discoloration. Never place hot objects directly on your wood product this may cause stains which are impossible to remove. The first two months the paint is not yet fully hardened. Avoid heavy load such as vases. Make sure you do not leave anything on one area of the surface for a longer period of time, as this may cause stains and discoloration.

To clean wood and keep it in good condition, we recommend to clean the wood surface with a damp, soft cloth and rub with a soft dry cloth. For cleaning always a clean white cloth.

Do not press too hard to prevent irreversible polishing of the surface. Spilled liquids must be removed from the surface immediately with a warm, damp cloth. Dry the surface directly afterwards with a cloth, wiping in the direction of the wood fiber. Do not let stains dry on the surface, but remove them immediately. The varnished surface of solid wood or veneer products will develop a patina within the first few weeks of use.

HPL

HPL is a material that can withstand scratches and high temperatures. The surface is smooth and non-porous, which makes it hygienic and easy to keep clean. Clean daily with a damp cloth.

Be careful with hot objects. Always use a trivet when hot objects are placed on the blade. Sharp objects can cause scratches.

This material is resistant to mild household cleaners. Aggressive substances must, however, be washed away as soon as they arrive on the blade. Heavy objects can cause scratches by sliding.

If it is prolonged too close to a heat source, the risk that the warmth penetrates into the underlying material, which is usually much more sensitive to prolonged heat.

It needs no special care. It's easy to clean. Never use (liquid) abrasives or scouring pads. Normal, everyday dirt can be removed with a soft, damp cloth. Remove dirt and stains preferably immediately. More stubborn stains and dried-on residue can be removed with a mild detergent solution or usually mild (non-abrasive) household cleaning. When cleaning the mildest possible means should be used. In particular, you should not use products containing abrasives. Possible residues of cleaning products removed with clean water, after which the material is again nice glossy with a dry with a clean cloth.

Please read the instructions of Duropal/Pfleiderer: <https://www.pfleiderer.com>

HPL Arpa Fenix. Arpa Fenix is a 'smart material' which is designed for interior applications. The unique features of Arpa Fenix are due to the top layer. It features a nanotech coating that ensures that the surface feels silky smooth. It is extremely matt and does not reflect. The color therefore never disappears. Another advantage of this is that there are no fingerprints are visible. A unique feature of Arpa Fenix is the ability to repair minor scratches through heat.

Please read the instructions of Arpa Fenix: <http://www.fenixforinteriors.com/>

Fabric

Only high quality fabrics are selected for the upholstered furniture. The characteristics such as rack, pilling, fading and dirt repellency are different for all fabrics. The fabrics from our collection contain natural fibers may become discolored by artificial or natural light. Generally discolor light fabrics less than dark colors. It is best to direct sunlight on your products to minimize. Perspiration or grease from skin or hair comes into contact with the substance can cause stains, including medication use can cause reactions.

Clean the upholstered furniture preferably only with a damp, clean white cloth and rub never hard about the matter. Furthermore, it is important to clean the upholstered furniture regularly with the soft nozzle of a vacuum cleaner so that the fabric between the fibers do not accumulate.

Please read the instructions of Kvadrat: <https://kvadrat.dk>

Leather

Leather is a natural product. The processed leathers by us are of a high quality. Leather is a natural product and there are always some natural features present. These features emphasize the authenticity of the leather, this can include scarring, structural differences are insect bites or neck folds. This is no reason for rejection, this prevents excessive material waste.

It will discolor by artificial or sunlight or by placement near a heater or radiator. Shine or dark spots can occur in places where there is a lot of contact.

Please read the instructions of Ohmann: <http://www.ohmannleather.com>

Steel / aluminum

Steel and aluminum have a robust appearance. It does not require special care. It's easy to clean. Never use (liquid) abrasives or scouring pads. Normal, everyday dirt can be removed with a soft, damp cloth. Remove dirt and stains preferably immediately. More stubborn stains and dried-on residue can be removed with a wrung microfiber cloth. Use mild soap or usually mild (non-abrasive) household cleaning. No means use products containing abrasives. Make the material spotless with a dry clean cloth.

Wool

Wool is a natural product and will discolor by artificial or sunlight or by placement near a heater or radiator. Generally lighter colors fade less than dark colors. It is best to avoid direct sunlight as much as possible and not too close to a heat source such as stove, fireplace, or radiator.

Please read the instructions of Wools of New Zealand: <http://www.woolnz.com>

Disclaimer

Our policy is one of continuous improvement and we reserve the right to change specifications without prior notice. Illustrations, colours and pictures are for guidance purposes only. Changes can occur in shape or colour depending on the material the good is made of or design of the good. The information in this brochure has been compiled with the utmost care. Liability for the correctness, completeness and topicality of the information is restricted to gross negligence. Sizes and details may vary.

www.dumoffice.com