

Casala meubelen

meinema
interieur | ontwerp | uitvoering
Info@meinema.nl
0031 - 20 311 8396

FABRICS

COLLECTION



casala

Quality fabrics united for stylish interior concepts

Casala fabrics combine a harmonious blend of colours and patterns ensuring they both complement and integrate effortlessly with each interior concept for professional and public spaces. In today's world, the choice of materials is not just about design and functionality, but also about the broader impact on our environment. Our fabric collection includes several fabrics made from recycled content. We are continuously looking for innovative and sustainable materials while maintaining commitment to quality, sustainability and our philosophy "Design Linked to Functionality".



casala

ARIZONA

FABRIC BAND 1



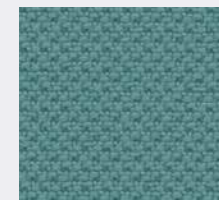
16026



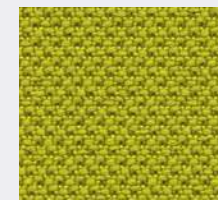
16005



15004



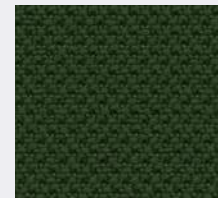
17026



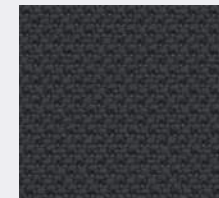
17011



16080



17029



18003



18078



13005



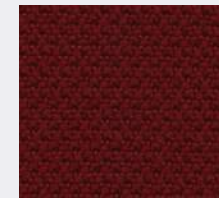
16031



18033



11006



14007



14027



14030

SPECIFICATIONS

UK MATERIAL
100% POLYESTER

WEIGHT / WIDTH
APPROX. 320 G/M² / APPROX. 140 CM

ABRASION RESISTANCE
100.000 MARTINDALE (ISO 12947/2)

FLAME RETARDENCY
M1 / CRIB 5 / EN 1021/1-2
BS 7176 MEDIUM HAZARD
NF D 60013 CLASS AM 18
CALIFORNIA TB117:2013

FASTNESS TO LIGHT
6 (ISO 105-B02)

FASTNESS TO RUBBING / PILLING
4-5 (ISO 105-X12) / 5 (ISO 12945-2)

NL MATERIAAL
100% POLYESTER

GEWICHT / BREEDTE
CA. 320 G/M² / CA. 140 CM

SLIJTWEERSTAND
100.000 MARTINDALE (ISO 12947/2)

BRANDVEILIGHEID
M1 / CRIB 5 / EN 1021/1-2
BS 7176 MEDIUM HAZARD
NF D 60013 CLASS AM 18
CALIFORNIA TB117:2013

LICHTECHTHEID
6 (ISO 105-B02)

WRIJFECHTHEID / PILLING
4-5 (ISO 105-X12) / 5 (ISO 12945-2)

DE MATERIAL
100% POLYESTER

GEWICHT / BREITE
CA. 320 G/M² / CA. 140 CM

SCHEUERFESTIGKEIT
100.000 MARTINDALE (ISO 12947/2)

BRANDVERHALTEN
M1 / CRIB 5 / EN 1021/1-2
BS 7176 MEDIUM HAZARD
NF D 60013 CLASS AM 18
CALIFORNIA TB117:2013

LICHTECHTHEIT
6 (ISO 105-B02)

REIBECHTHEID / PILLING
4-5 (ISO 105-X12) / 5 (ISO 12945-2)

FR MATÉRIAU
100% POLYESTER

POIDS / LARGEUR
CA. 320 G/M² / CA. 140 CM

SOLIDITÉ À LA LUMIÈRE
100.000 MARTINDALE (ISO 12947/2)

NON FEU
M1 / CRIB 5 / EN 1021/1-2
BS 7176 MEDIUM HAZARD
NF D 60013 CLASS AM 18
CALIFORNIA TB117:2013

SOLIDITÉ LUMIÈRE
6 (ISO 105-B02)

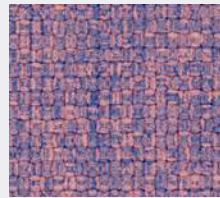
RÉSISTANCE AU FROTTEMENT / PILING
4-5 (ISO 105-X12) / 5 (ISO 12945-2)

SAMPLE SERVICE

The colours in this publication may differ to the original product. We recommend requesting a product sample.

FLORIDA

(100% POLYESTER, GRS RECYCLED) FABRIC BAND 2



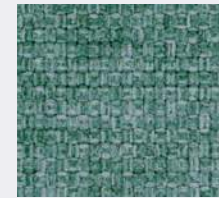
26018



21020



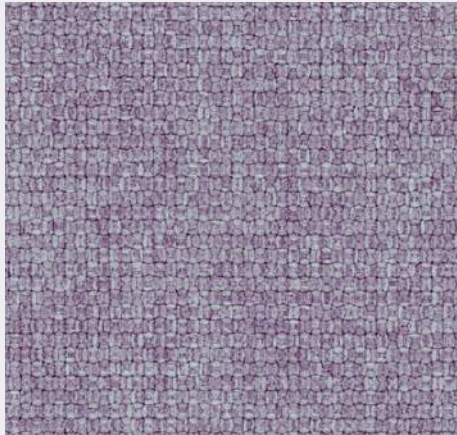
22005



27008



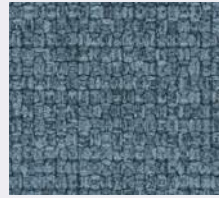
28048



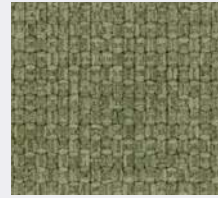
26091



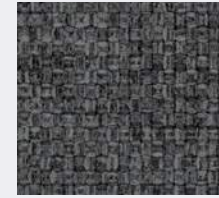
26070



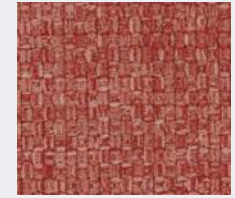
26031



27019



28006



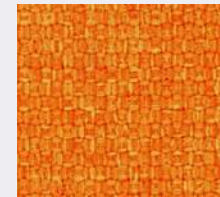
24079



26034



23090



23094



24022



24021

SPECIFICATIONS

UK MATERIAL
100% POLYESTER, GRS 2020-138 RECYCLED

WEIGHT / WIDTH
APPROX. 350 G/M² / APPROX. 140 CM

ABRASION RESISTANCE
100.000 MARTINDALE (ISO 12947/2)

FLAME RETARDENCY
1 IM (UNI 9175) / BS 7176
CALIFORNIA TB 117 /
CRIB 5 (BS 5852 PART II)
EN 1021-1&2 / IMO PART 8

FASTNESS TO LIGHT
6 (ISO 105-B02)

FASTNESS TO RUBBING / PILLING
4-5 (ISO 105-X12) / 5 (ISO 12945-2)

NL MATERIAAL
100% POLYESTER, GRS 2020-138 GERECYCLED

GEWICHT / BREEDTE
CA. 350 G/M² / CA. 140 CM

SLIJTWEERSTAND
100.000 MARTINDALE (ISO 12947/2)

BRANDVEILIGHEID
1 IM (UNI 9175) / BS 7176
CALIFORNIA TB 117 /
CRIB 5 (BS 5852 PART II)
EN 1021-1&2 / IMO PART 8

LICHTECHTHEID
6 (ISO 105-B02)

WRIJFECHTHEID / PILLING
4-5 (ISO 105-X12) / 5 (ISO 12945-2)

DE MATERIAL
100% POLYESTER, GRS 2020-138 RECYCEL

GEWICHT / BREITE
CA. 350 G/M² / CA. 140 CM

SCHEUERFESTIGKEIT
100.000 MARTINDALE (ISO 12947/2)

BRANDVERHALTEN
1 IM (UNI 9175) / BS 7176
CALIFORNIA TB 117 /
CRIB 5 (BS 5852 PART II)
EN 1021-1&2 / IMO PART 8

LICHTECHTHEIT
6 (ISO 105-B02)

REIBECHTHEID / PILLING
4-5 (ISO 105-X12) / 5 (ISO 12945-2)

FR MATÉRIAU
100% POLYESTER, GRS 2020-138 RECYCLÉ

POIDS / LARGEUR
CA. 350 G/M² / CA. 140 CM

SOLIDITÉ À LA LUMIÈRE
100.000 MARTINDALE (ISO 12947/2)

NON FEU
1 IM (UNI 9175) / BS 7176
CALIFORNIA TB 117 /
CRIB 5 (BS 5852 PART II)
EN 1021-1&2 / IMO PART 8

SOLIDITÉ LUMIÈRE
6 (ISO 105-B02)

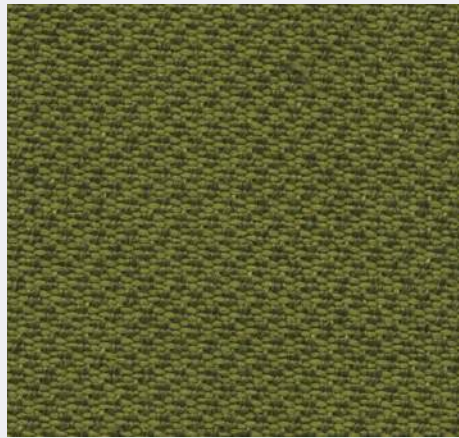
RÉSISTANCE AU FROTTEMENT / PILING
4-5 (ISO 105-X12) / 5 (ISO 12945-2)

SAMPLE SERVICE

The colours in this publication may differ to the original product. We recommend requesting a product sample.

CALIFORNIA

(100% RECYCLED POLYESTER) FABRIC BAND 3



37521



37029



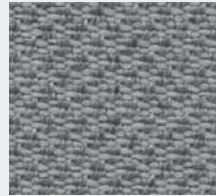
38517



34522



33509



38532



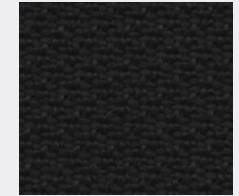
37504



34503



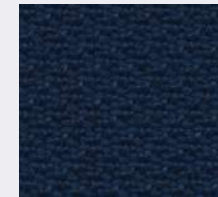
36524



38033



31506



36080

SPECIFICATIONS

UK MATERIAL

100% RECYCLED POLYESTER
SEAQUAL® CERTIFIED

WEIGHT / WIDTH
APPROX. 330 G/M² / APPROX. 140 CM

ABRASION RESISTANCE
100.000 MARTINDALE (ISO 12947/2)

FLAME RETARDENCY
1 IM (UNI 9175)
CALIFORNIA TB 117
EN 1021-1&2
IMO PART 8 / BS 7176 MEDIUM HAZARD

FASTNESS TO LIGHT
6 (ISO 105-B02)

FASTNESS TO RUBBING / PILLING
4-5 (ISO 105-X12) / 5 (ISO 12945-2)

NL MATERIAAL

100% RECYCLED POLYESTER
SEAQUAL® CERTIFIED

GEWICHT / BREEDTE
CA. 330 G/M² / CA. 140 CM

SLIJTWEERSTAND
100.000 MARTINDALE (ISO 12947/2)

BRANDVEILIGHEID
1 IM (UNI 9175)
CALIFORNIA TB 117
EN 1021-1&2
IMO PART 8 / BS 7176 MEDIUM HAZARD

LICHTECHTHEID
6 (ISO 105-B02)

WRIJFECHTHEID / PILLING
4-5 (ISO 105-X12) / 5 (ISO 12945-2)

DE MATERIAL

100% RECYCLED POLYESTER
SEAQUAL® CERTIFIED

GEWICHT / BREITE
CA. 330 G/M² / CA. 140 CM

SCHEUERFESTIGKEIT
100.000 MARTINDALE (ISO 12947/2)

BRANDVERHALTEN
1 IM (UNI 9175)
CALIFORNIA TB 117
EN 1021-1&2
IMO PART 8 / BS 7176 MEDIUM HAZARD

LICHTECHTHEIT
6 (ISO 105-B02)

REIBECHTHEID / PILLING
4-5 (ISO 105-X12) / 5 (ISO 12945-2)

FR MATÉRIAU

100% RECYCLED POLYESTER
SEAQUAL® CERTIFIED

POIDS / LARGEUR
CA. 330 G/M² / CA. 140 CM

SOLIDITÉ À LA LUMIÈRE
100.000 MARTINDALE (ISO 12947/2)

NON FEU
1 IM (UNI 9175)
CALIFORNIA TB 117
EN 1021-1&2
IMO PART 8 / BS 7176 MEDIUM HAZARD

SOLIDITÉ LUMIÈRE
6 (ISO 105-B02)

RÉSISTANCE AU FROTTEMENT / PILING
4-5 (ISO 105-X12) / 5 (ISO 12945-2)

SAMPLE SERVICE

The colours in this publication may differ to the original product. We recommend requesting a product sample.

DAKOTA

FABRIC BAND 3



SPECIFICATIONS

UK MATERIAL
100% TREVIRA CS®

WEIGHT / WIDTH
APPROX. 280 G/M2 / APPROX. 140 CM

ABRASION RESISTANCE
80.000 MARTINDALE (ISO 12947/2)

FLAME RETARDENCY
1 IM (UNI 9175) / AM 18 (NF D 60013)
B1 (DIN 4102) / BS 7176 MEDIUM HAZARD
C1 / CALIFORNIA TB 117 / CRIB 5
EN 1021/1-2 / IMO PART 8 / M1
ONORM B 3825-A 3800-1 CLAS B1-Q-1-TR1

FASTNESS TO LIGHT
6 (ISO 105-B02)

FASTNESS TO RUBBING/ PILLING
4-5 (ISO 105-X12) / 5 (ISO 12945-2)

NL MATERIAAL
100% TREVIRA CS®

GEWICHT / BREEDTE
CA. 280 G/M2 / CA. 140 CM

SLIJTWEERSTAND
80.000 MARTINDALE (ISO 12947/2)

BRANDVEILIGHEID
1 IM (UNI 9175) / AM 18 (NF D 60013)
B1 (DIN 4102) / BS 7176 MEDIUM HAZARD
C1 / CALIFORNIA TB 117 / CRIB 5
EN 1021/1-2 / IMO PART 8 / M1
ONORM B 3825-A 3800-1 CLAS B1-Q-1-TR1

LICHTECHTHEID
6 (ISO 105-B02)

WRIJFECHTHEID / PILLING
4-5 (ISO 105-X12) / 5 (ISO 12945-2)

DE MATERIAL
100% TREVIRA CS®

GEWICHT / BREITE
CA. 280 G/M2 / CA. 140 CM

SCHEUERFESTIGKEIT
80.000 MARTINDALE (ISO 12947/2)

BRANDVERHALTEN
1 IM (UNI 9175) / AM 18 (NF D 60013)
B1 (DIN 4102) / BS 7176 MEDIUM HAZARD
C1 / CALIFORNIA TB 117 / CRIB 5
EN 1021/1-2 / IMO PART 8 / M1
ONORM B 3825-A 3800-1 CLAS B1-Q-1-TR1

LICHTECHTHEIT
6 (ISO 105-B02)

REIBECHTHEID / PILLING
4-5 (ISO 105-X12) / 5 (ISO 12945-2)

FR MATÉRIAU
100% TREVIRA CS®

POIDS / LARGEUR
CA. 280 G/M2 / CA. 140 CM

SOLIDITÉ À LA LUMIÈRE UNI
80.000 MARTINDALE (ISO 12947/2)

NON FEU
1 IM (UNI 9175) / AM 18 (NF D 60013)
B1 (DIN 4102) / BS 7176 MEDIUM HAZARD
C1 / CALIFORNIA TB 117 / CRIB 5
EN 1021/1-2 / IMO PART 8 / M1
ONORM B 3825-A 3800-1 CLAS B1-Q-1-TR1

SOLIDITÉ LUMIÈRE
6 (ISO 105-B02)

RÉSISTANCE AU FROTTEMENT / PILING
4-5 (ISO 105-X12) / 5 (ISO 12945-2)

SAMPLE SERVICE

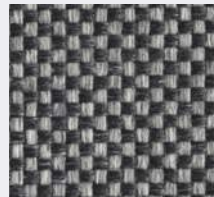
The colours in this publication may differ to the original product. We recommend requesting a product sample.

GEORGIA

FABRIC BAND 4



49108



49803



49820



49605



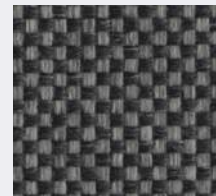
49616



49102



49107



49804



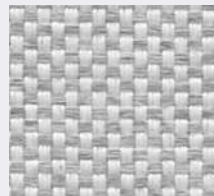
49322



49206



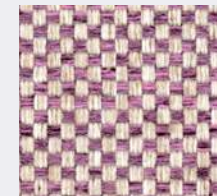
49309



49109



49305



49105



49227



49217

SPECIFICATIONS

UK MATERIAL
100% TREVIRA CS®

WEIGHT / WIDTH
APPROX. 400 G/M2 / APPROX. 150 CM

ABRASION RESISTANCE
75.000 MARTINDALE (ISO 12947/2)

FLAME RETARDENCY
B1 / M1 / CRIB 5 / EN 1021/1-2
IMO RES. A 652 (16) PART 8
BS 7176 MEDIUM HAZARD
NF D 60013 CLASS AM 18

FASTNESS TO LIGHT
6 (ISO 105-B02)

FASTNESS TO RUBBING / PILLING
4-5 (ISO 105-X12) / 5 (ISO 12945-2)

NL MATERIAAL
100% TREVIRA CS®

GEWICHT / BREEDTE
CA. 400 G/M2 / CA. 150 CM

SLIJTWEERSTAND
75.000 MARTINDALE (ISO 12947/2)

BRANDVEILIGHEID
B1 / M1 / CRIB 5 / EN 1021/1-2
IMO RES. A 652 (16) PART 8
BS 7176 MEDIUM HAZARD
NF D 60013 CLASS AM 18

LICHTECHTHEID
6 (ISO 105-B02)

WRIJFECHTHEID / PILLING
4-5 (ISO 105-X12) / 5 (ISO 12945-2)

DE MATERIAL
100% TREVIRA CS®

GEWICHT / BREITE
CA. 400 G/M2 / CA. 150 CM

SCHEUERFESTIGKEIT
75.000 MARTINDALE (ISO 12947/2)

BRANDVERHALTEN
B1 / M1 / CRIB 5 / EN 1021/1-2
IMO RES. A 652 (16) PART 8
BS 7176 MEDIUM HAZARD
NF D 60013 CLASS AM 18

LICHTECHTHEIT
6 (ISO 105-B02)

REIBECHTHEID / PILLING
4-5 (ISO 105-X12) / 5 (ISO 12945-2)

FR MATÉRIAU
100% TREVIRA CS®

POIDS / LARGEUR
CA. 400 G/M2 / CA. 150 CM

SOLIDITÉ À LA LUMIÈRE
75.000 MARTINDALE (ISO 12947/2)

NON FEU
B1 / M1 / CRIB 5 / EN 1021/1-2
IMO RES. A 652 (16) PART 8
BS 7176 MEDIUM HAZARD
NF D 60013 CLASS AM 18

SOLIDITÉ LUMIÈRE
6 (ISO 105-B02)

RÉSISTANCE AU FROTTEMENT / PILING
4-5 (ISO 105-X12) / 5 (ISO 12945-2)

SAMPLE SERVICE

The colours in this publication may differ to the original product. We recommend requesting a product sample.

FABRICS

3RD PARTY



camira

Gabriel

kvadrat

ONIRO
textiles

ohmann leather®

VYVA
FABRICS

casala

XTREME

FABRIC BAND 2



SPECIFICATIONS & SAMPLE SERVICE

The colours in this publication may differ to the original product.
We recommend requesting a product sample.

CURA

Fabric band 2

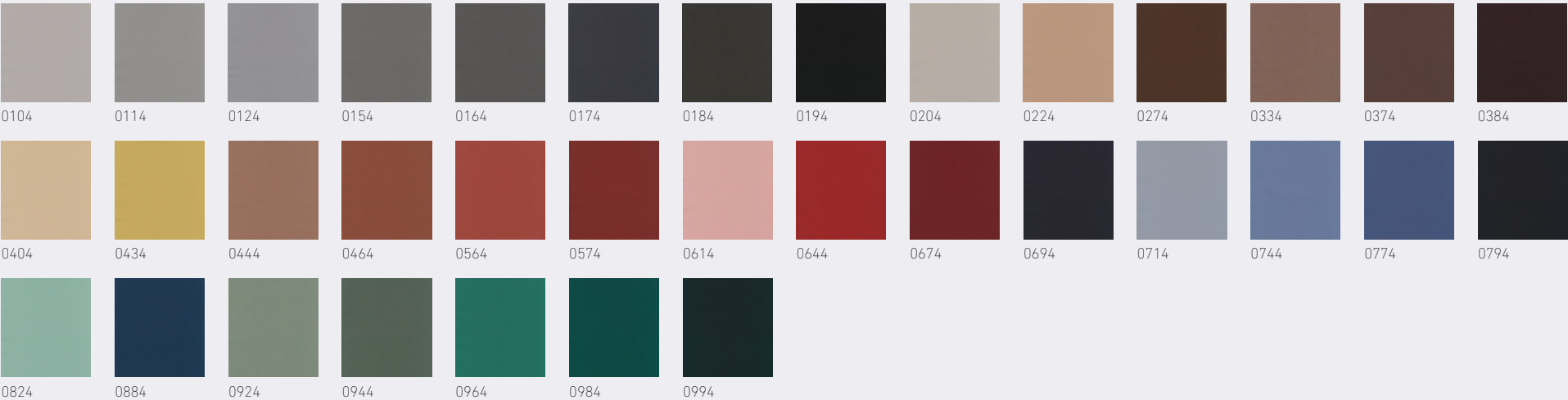


SPECIFICATIONS & SAMPLE SERVICE

The colours in this publication may differ to the original product. We recommend requesting a product sample.

REFLECT

Fabric band 3



SPECIFICATIONS & SAMPLE SERVICE

The colours in this publication may differ to the original product. We recommend requesting a product sample.

FAME

Fabric band 3



SPECIFICATIONS & SAMPLE SERVICE

The colours in this publication may differ to the original product. We recommend requesting a product sample.

SILVERGUARD

Fabric band 3

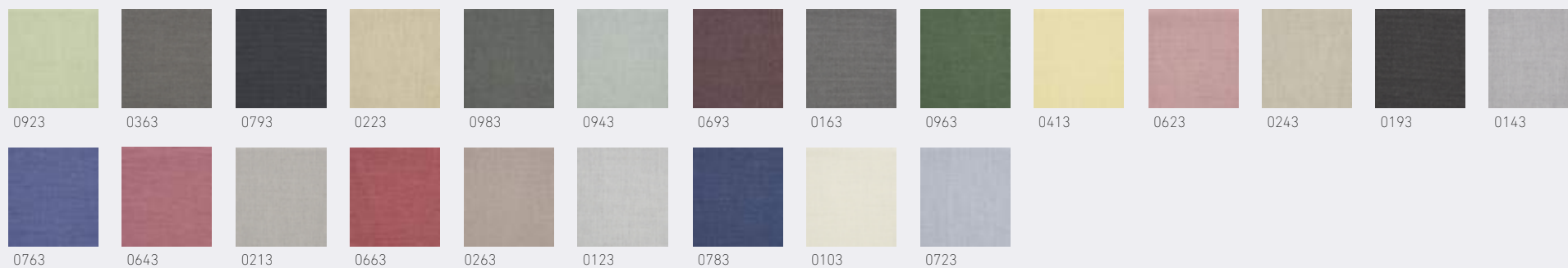


SPECIFICATIONS & SAMPLE SERVICE

The colours in this publication may differ to the original product. We recommend requesting a product sample.

FLOYD

Fabric band 4



SPECIFICATIONS & SAMPLE SERVICE

The colours in this publication may differ to the original product. We recommend requesting a product sample.

PUXX

Fabric band 4

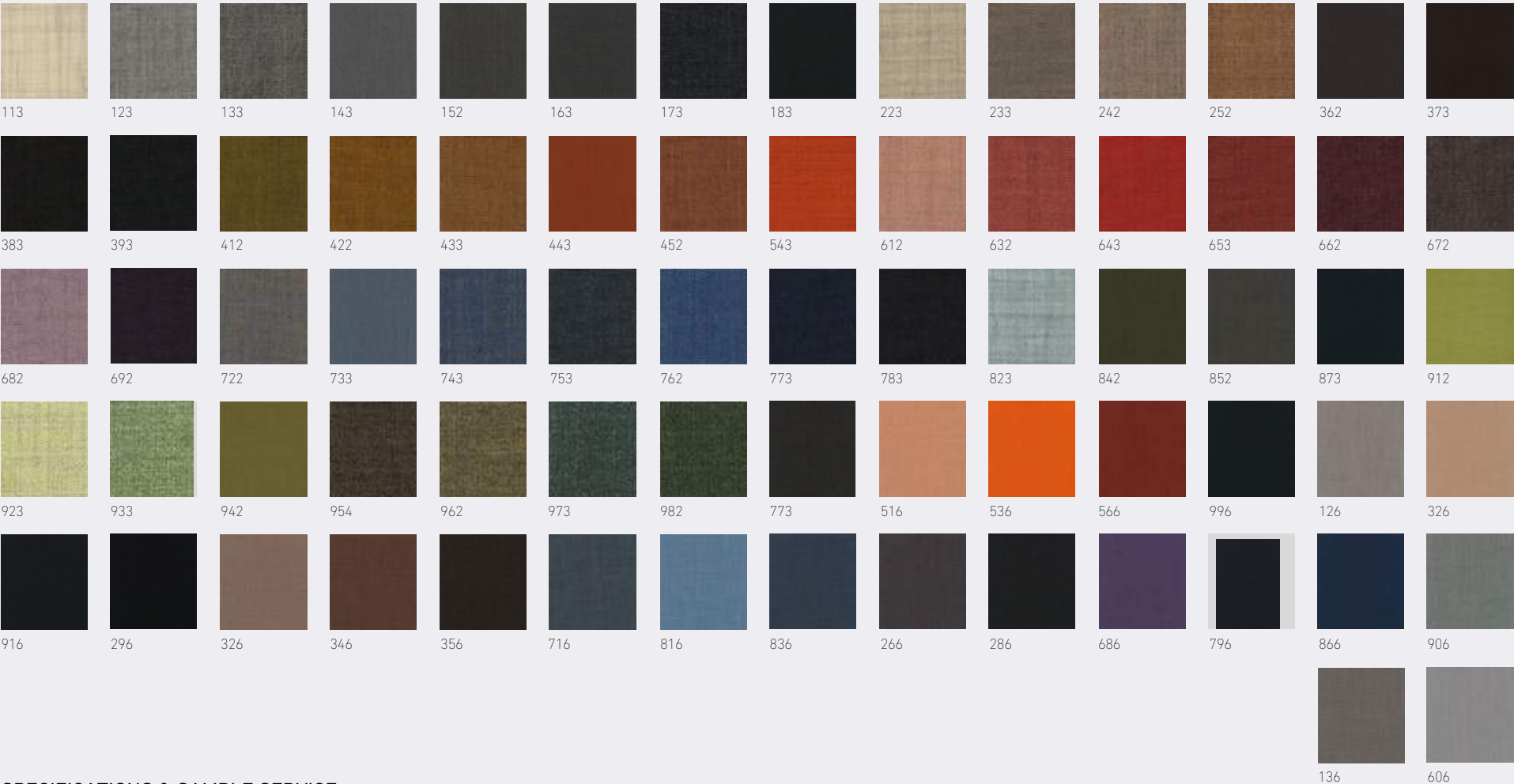


SPECIFICATIONS & SAMPLE SERVICE

The colours in this publication may differ to the original product. We recommend requesting a product sample.

REMIX 3

Fabric band 4



SPECIFICATIONS & SAMPLE SERVICE

The colours in this publication may differ to the original product. We recommend requesting a product sample.

CLARA 2

Fabric band 5

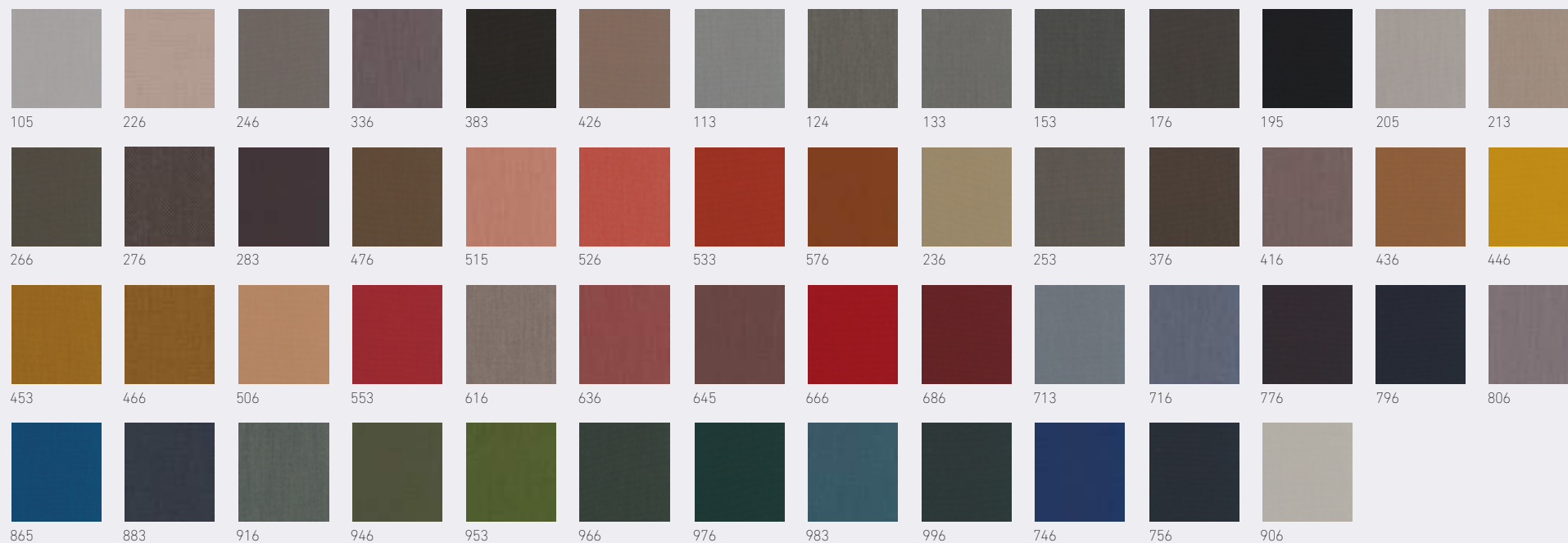


SPECIFICATIONS & SAMPLE SERVICE

The colours in this publication may differ to the original product. We recommend requesting a product sample.

STEELCUT TRIO

Fabric band 5



SPECIFICATIONS & SAMPLE SERVICE

The colours in this publication may differ to the original product. We recommend requesting a product sample.

TONUS 4

Fabric band 5



SPECIFICATIONS & SAMPLE SERVICE

The colours in this publication may differ to the original product. We recommend requesting a product sample.

CANVAS 2

Fabric band 6



SPECIFICATIONS & SAMPLE SERVICE

The colours in this publication may differ to the original product. We recommend requesting a product sample.

DIVINA 3

Fabric band 6

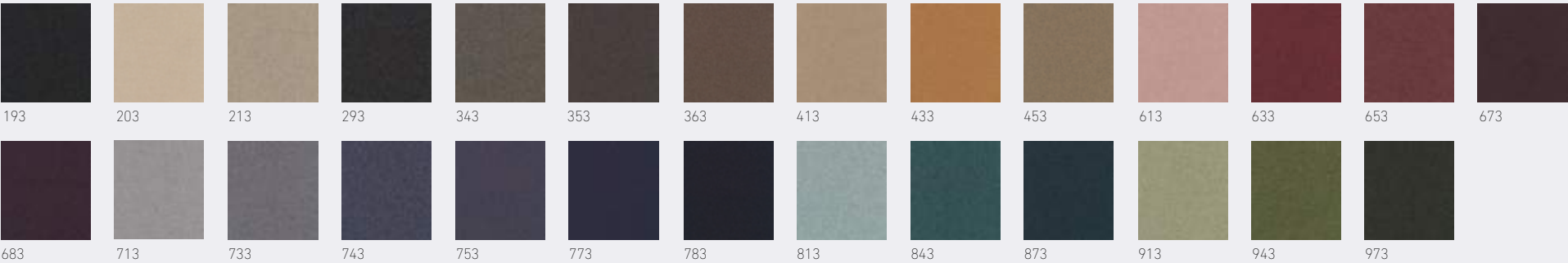


SPECIFICATIONS & SAMPLE SERVICE

The colours in this publication may differ to the original product. We recommend requesting a product sample.

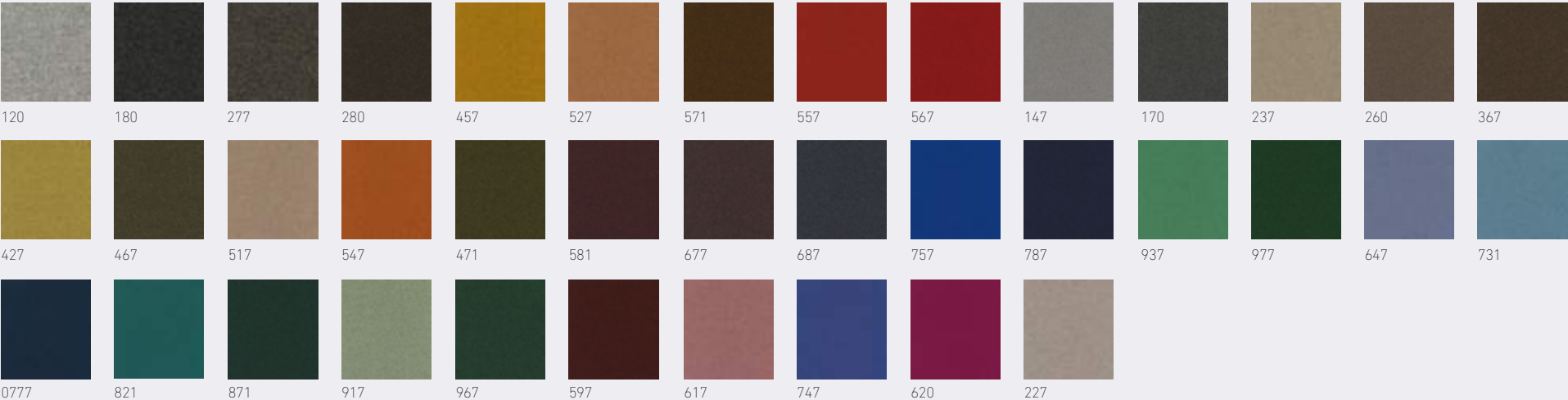
DIVINA MD

Fabric band 6



DIVINA MELANGE 3

Fabric band 6



SPECIFICATIONS & SAMPLE SERVICE

The colours in this publication may differ to the original product. We recommend requesting a product sample.

HALLINGDAL 65

Fabric band 7

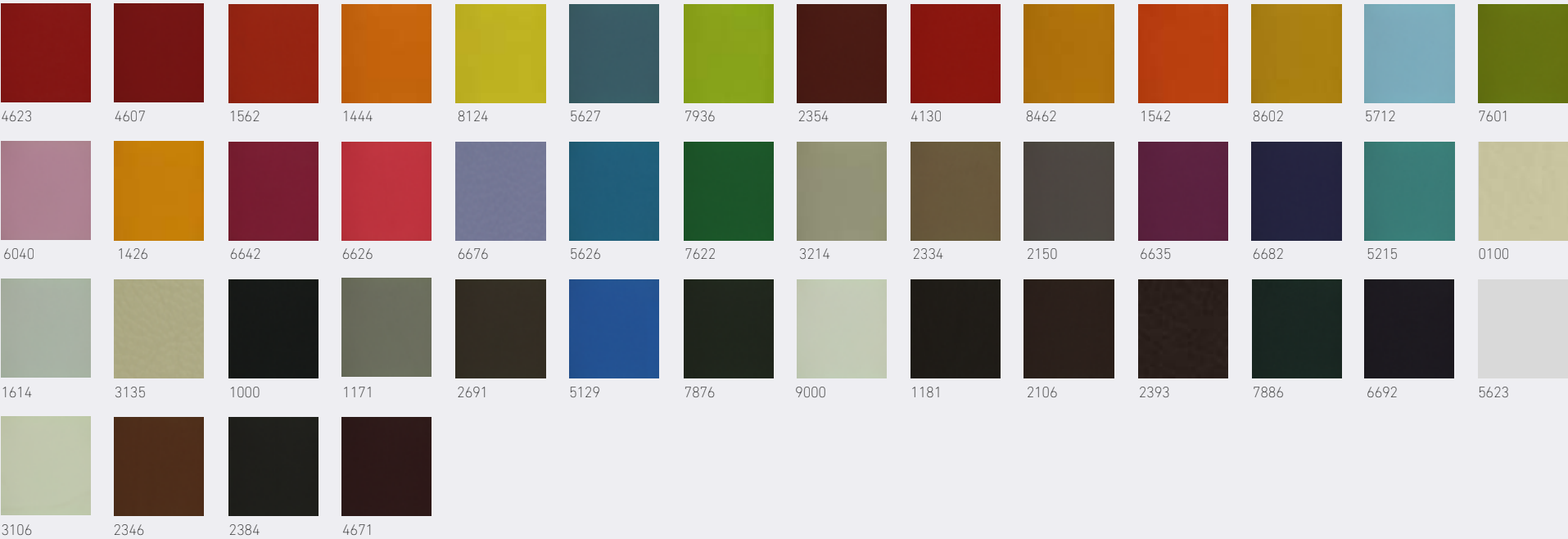


SPECIFICATIONS & SAMPLE SERVICE

The colours in this publication may differ to the original product. We recommend requesting a product sample.

LEATHER

Collection 1012



SPECIFICATIONS & SAMPLE SERVICE

The colours in this publication may differ to the original product.
We recommend requesting a product sample.

FABRICS

CAPSULE



casala

NEVADA

FABRIC BAND 3



SPECIFICATIONS

UK MATERIAL

100% POLYESTER

WEIGHT / WIDTH

APPROX. 488 G/M² / APPROX. 140 CM

ABRASION RESISTANCE

50.000 MARTINDALE (ISO 12947/2)

FLAME RETARDENCY

BS5852 SOURCE 0-1* (*FR FOAM)
EN 1021/1-2 / CAL TB 117 / NFPA 260
BS 7176 LOW HAZARD / UNI 9175 CLASE 11M
IMO ANNEX 1 PART / NF D 60 013
NF P92-507-M1 / DIN 4102 B2

FASTNESS TO LIGHT

6-7 (EN ISO 105-B02)

FASTNESS TO RUBBING

DRY: 5 / WET: 4-5 (ISO 105-X12)

PILLING

4-5 (ISO 12945-2)

NL MATERIAAL

100% POLYESTER

GEWICHT / BREEDTE

CA. 488 G/M² / CA. 140 CM

SLIJTWEERSTAND

50.000 MARTINDALE (ISO 12947/2)

BRANDVEILIGHEID

BS5852 SOURCE 0-1* (*FR FOAM)
EN 1021/1-2 / CAL TB 117 / NFPA 260
BS 7176 LOW HAZARD / UNI 9175 CLASE 11M
IMO ANNEX 1 PART / NF D 60 013
NF P92-507-M1 / DIN 4102 B2

LICHTECHTHEID

6-7 (EN ISO 105-B02)

WRIJFECHTHEID

DRY: 5 / WET: 4-5 (ISO 105-X12)

PILLING

4-5 (ISO 12945-2)

DE MATERIAL

100% POLYESTER

GEWICHT / BREITE

CA. 488 G/M² / CA. 140 CM

SCHEUERFESTIGKEIT

50.000 MARTINDALE (ISO 12947/2)

BRANDVERHALTEN

BS5852 SOURCE 0-1* (*FR FOAM)
EN 1021/1-2 / CAL TB 117 / NFPA 260
BS 7176 LOW HAZARD / UNI 9175 CLASE 11M
IMO ANNEX 1 PART / NF D 60 013
NF P92-507-M1 / DIN 4102 B2

LICHTECHTHEIT

6-7 (EN ISO 105-B02)

REIBECHTHEID

DRY: 5 / WET: 4-5 (ISO 105-X12)

PILLING

4-5 (ISO 12945-2)

FR MATÉRIAU

100% POLYESTER

POIDS / LARGEUR

CA. 488 G/M² / CA. 140 CM

SOLIDITÉ À LA LUMIÈRE

50.000 MARTINDALE (ISO 12947/2)

NON FEU

BS5852 SOURCE 0-1* (*FR FOAM)
EN 1021/1-2 / CAL TB 117 / NFPA 260
BS 7176 LOW HAZARD / UNI 9175 CLASE 11M
IMO ANNEX 1 PART / NF D 60 013
NF P92-507-M1 / DIN 4102 B2

SOLIDITÉ LUMIÈRE

6-7 (EN ISO 105-B02)

RÉSISTANCE AU FROTTEMENT

DRY: 5 / WET: 4-5 (ISO 105-X12)

PILLING

4-5 (ISO 12945-2)

SAMPLE SERVICE

The colours in this publication may differ to the original product. We recommend requesting a product sample.



5 YEAR GUARANTEE



MIZMAZE



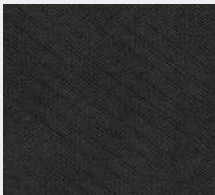
0762



0712



0882



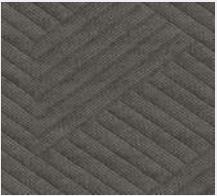
0392



0122



0562



0252



0212



0342



0682



0962



0322

SPECIFICATIONS & SAMPLE SERVICE

The colours in this publication may differ to the original product. We recommend requesting a product sample.

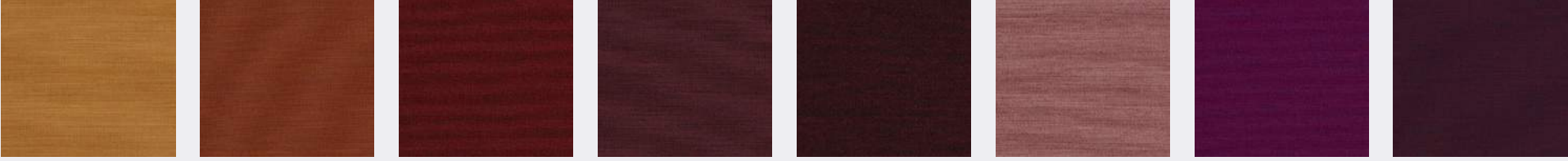
UNIFORM MELANGE



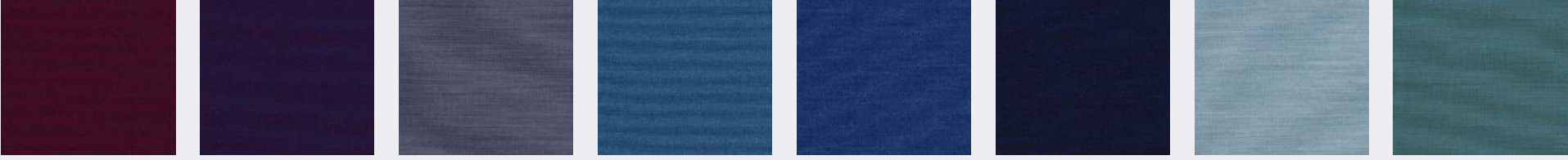
0103 0123 0133 0153 0163 0183 0193 0263



0283 0293 0333 0353 0363 0413 0433 0453



0463 0553 0563 0583 0593 0623 0633 0653



0663 0683 0723 0753 0763 0793 0813 0833

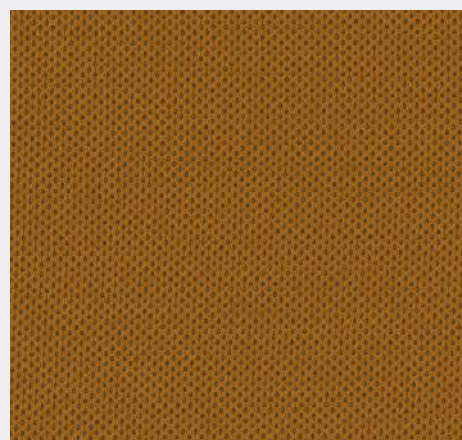
SPECIFICATIONS & SAMPLE SERVICE

The colours in this publication may differ to the original product. We recommend



0883 0913 0933 0963 0983 0993

PLECTO



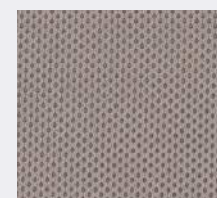
0444



0134



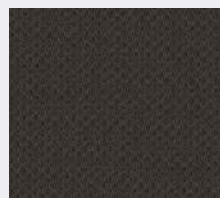
0184



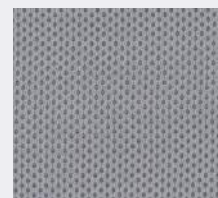
0224



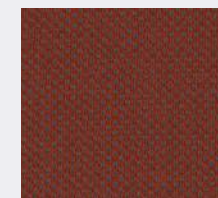
0244



0284



0114



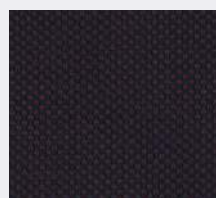
0564



0624



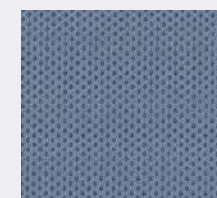
0654



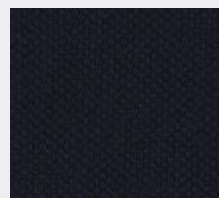
0784



0984



0734



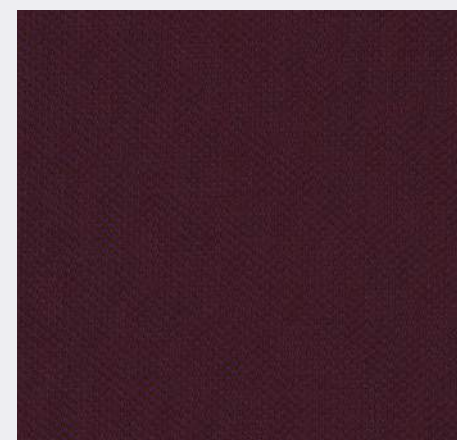
0794



0874



0934



0684

SPECIFICATIONS & SAMPLE SERVICE

The colours in this publication may differ to the original product. We recommend requesting a product sample.

PLANUM



0111



0141



0201



0241



0271



0751



0681



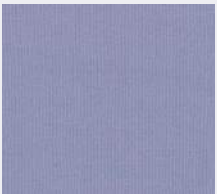
0571



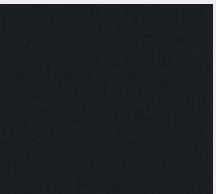
0351



0741



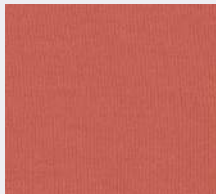
0711



0791



0551



0521



0441



0921



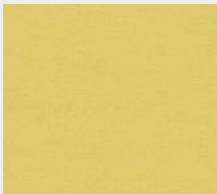
0941



0961



0971



0411

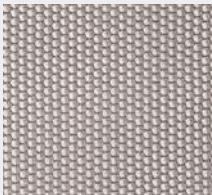
SPECIFICATIONS & SAMPLE SERVICE

The colours in this publication may differ to the original product. We recommend requesting a product sample.

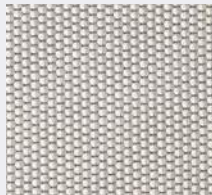
DROP



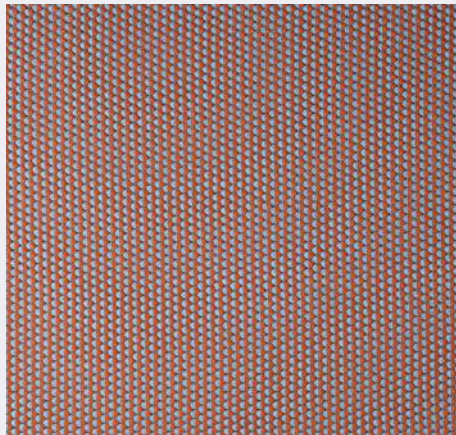
0101



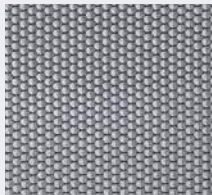
0221



0121



0461



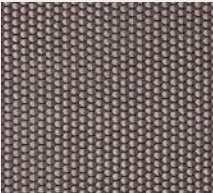
0151



0191



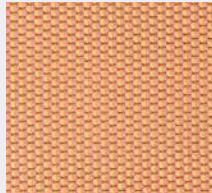
0291



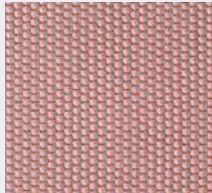
0261



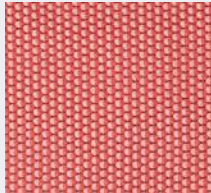
0421



0441



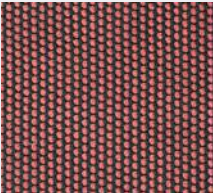
0621



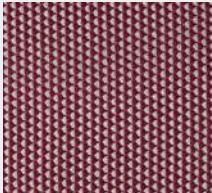
0641



0651



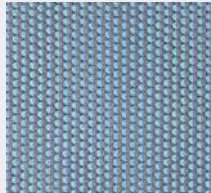
0661



0671



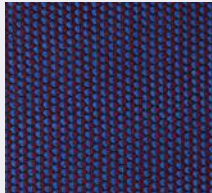
0691



0721



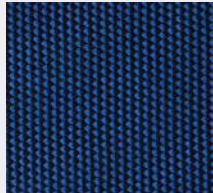
0751



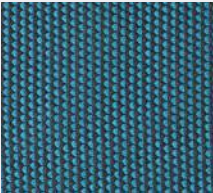
0761



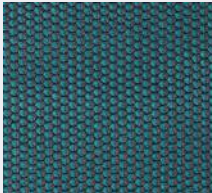
0771



0791



0851



0871



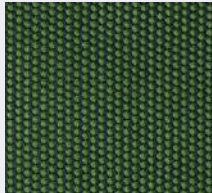
0891



0921



0951



0961



0971



0991

SPECIFICATIONS & SAMPLE SERVICE

The colours in this publication may differ to the original product. We recommend requesting a product sample.

Quality materials united for stylish interior concepts

Casala's materials and finishes combine a harmonious blend of colours and patterns ensuring they both complement and integrate effortlessly with each interior concept for professional and public spaces. In today's world, the choice of materials is not just about design and functionality, but also about the broader impact on our environment. Our materials contain a high percentage of recycled content and meet various standard certifications. We are continuously looking for innovative and sustainable materials and production techniques, while maintaining commitment to quality, sustainability and our philosophy "Design Linked to Functionality".



casala

FINISHES

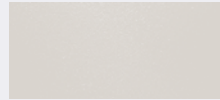
FINE TEXTURE POWDER COATINGS



Pebble grey FT21



White FT12



Dusty grey FT20



Frosty blue FT27



Sharkskin grey FT17



Olive green FT16



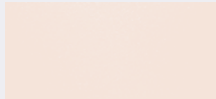
Mud grey FT29



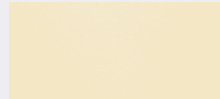
Saddle brown FT28



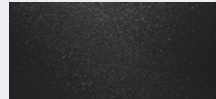
Sunflower yellow FT24



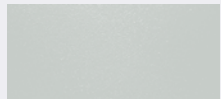
Soft pink FT23



Soft ivory FT18



Black FT11



Foggy green FT26



Maroon red FT25

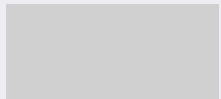


Midnight blue FT19



Pine green FT22

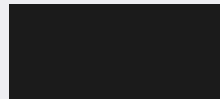
SILK GLOSS POWDER COATINGS



Light grey SG11



Tenor grey SG17



Black SG15



Silver grey SG21



Aluminium grey SG12



Traffic grey SG20

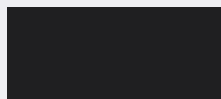


Traffic white SG16

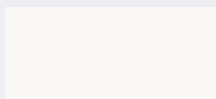


Atonium grey SG23

SOFT TOUCH POWDER COATINGS



Black SFT01



White SFT02

CHROME III



Chrome III

SAMPLE SERVICE

The colours in this publication may differ to the original product. We recommend requesting a product sample.s

COLOUR CODES SILK GLOSS POWDER COATINGS

	PMS	RAL	RGB	CMYK
Light grey	Coolgrey 2C	7035	208/208/206	5/3/5/11
Aluminium grey			170/170/172	36/28/27/6
Black	Process black	9005	24/24/26	74/68/64/78
Traffic white		9016	255/255/255	0/0/0/0
Tenor grey			112/112/114	54/43/41/27
Traffic grey		7043	66/67/69	66/56/51/53
Silver grey		7042	143/141/144	37/30/28/26

COLOUR CODES SOFT TOUCH POWDER COATINGS

	PMS	RAL	RGB	CMYK
Black	Process black	9005	24/24/26	74/68/64/78
White		9010	255/255/255	0/0/0/0

COLOUR CODES FINE TEXTURE POWDER COATINGS

	PMS	RAL	RGB	CMYK
Black	Process black	9005	24/24/26	74/68/64/78
White		9010	255/255/255	0/0/0/0
Olive green		7003	107/101/85	51/44/57/36
Sharkskin grey		7031	91/103/112	45/25/16/59
Soft ivory	431C	1015	241/230/178	1/2/24/0
Midnight blue	7499C	5008	24/35/41	87/70/56/72
Dusty grey		9002	217/212/206	17/14/17/0
Pebble grey	400C	7044	196/191/182	6/7/13/16
Pine green	5605C	6009	34/55/43	82/36/83/90
Soft pink			245/288/218	4/12/14/0
Sunflower yellow		1002	203/172/118	5/20/50/10
Maroon red		3005	89/25/31	40/100/60/40
Foggy green			198/204/200	26/15/21/1
Frosty blue			190/201/203	30/15/19/1
Saddle brown		8011	86/57/39	42/63/72/62
Mud grey		7006	116/103/94	46/45/49/35

FINISHES

POWDER COATINGS INFO

UK The powder coat used, does not contain toxic substances or components that hold heavy metals. During the production process, the redundant powder is intercepted and re-used in our production process.

Powder coat colours that are not standard to the Casala collection can be used at the customer's request. Special powder coat colours on request only. The additional price varies by colour and order quantity. When the colour is received, a sample will be produced, which will be sent to the client for approval. The lead time starts after approval of the sample. This will be available in approx. 2 weeks.

NL De gebruikte poedercoat bevat geen giftige stoffen en geen zwaar metaalhoudende grondstoffen. Tijdens het productieproces wordt de overtollige poederlak volledig opgevangen en hergebruikt.

Poedercoat kleuren welke niet zijn opgenomen in de standaard Casala collectie zijn op aanvraag. Poedercoat kleuren naar staal is enkel mogelijk op aanvraag. Prijs varieert per kleur en orderhoeveelheid. Na ontvangst van de kleurstaal wordt een proefstaal vervaardigd. Deze wordt de opdrachtgever toegezonden ter goedkeuring. De levertijd gaat in na goedkeuring van de proefstaal. Deze is in ca. 2 weken beschikbaar.

DE Pulverlacke, die wir verarbeiten, enthalten keine giftige Stoffe und keine schwermetallhaltige Grundstoffe. Bei der Verarbeitung wird überschüssiges Farbpulver vollständig abgesaugt und wieder neu verwendet.

Pulverbeschichtung Farben, die nicht in unserer Standardkollektion enthalten sind, sind auf Anfrage gegen Mehrpreis möglich. Ein Sonderfarbton ist nur auf Anfrage möglich. Preis variiert je nach Farbe und Bestellmenge. Nach Empfang Ihrer Farbprobe wird eine Gegenprobe angefertigt, die Ihnen zur Abnahme zugeschickt wird. Die Lieferzeit eines Auftrages nach Farbprobe kann erst genehmigt werden ab Genehmigung der Gegenprobe. Eine Gegenprobe wird innerhalb von ca. 2 Wochen nach Empfang zur Verfügung gestellt.

FR Les vernis en poudre que nous utilisons ne contiennent ni produits toxiques, ni métaux lourds. Lors du processus de fabrication, la poudre inutilisée est récupérée en totalité pour être réutilisée plus tard.

Les couleurs d'époxy qui ne sont pas mentionnées dans la collection standard de Casala peuvent être commandées sur demande. Couleurs d'époxy spéciales sur demande seulement. Le supplément de prix varie selon la couleur et la quantité commandées. Après réception de l'échantillon de couleur, nous vous faisons parvenir un essai pour accord. Le délai de livraison prend date à partir du moment où vous avez donné votre accord. Pour un essai, il faut compter environ deux semaines.

SAMPLE SERVICE

The colours in this publication may differ to the original product. We recommend requesting a product sample.

CHROME III INFO

UK The chromed metal parts in our products do not decree dangerous chromium VI-alliances. The chroming process is strictly monitored. Production is in compliance with NEN-EN 7089 policy. All chrome-plated parts of Casala furniture are coated with Chrome-3. Chrome-3, unlike Chrome-6, is a healthy and ecologically responsible choice. The Chrome-3 used meets the strictest requirements for REACH and CSR guidelines.

NL De verchromde metalen onderdelen in onze producten scheiden geen gevaarlijke chroom VI-verbindingen af. Het verchromingsproces staat onder streng toezicht. Het productieproces is in overeenstemming met NEN-EN 7089. Alle verchromde onderdelen van Casala meubilair worden voorzien van Chroom-3. Chroom-3 is, in tegenstelling tot Chroom-6, een gezonde en ecologisch verantwoorde keuze. Het toegepast Chroom-3 voldoet aan de strengste eisen voor REACH en MVO-richtlijnen.

DE Verchromte Metallgestelle aus unserer Produktion scheiden keine gefährlichen Chrom VI-Verbindungen aus. Der gesamte Verchromungsprozeß steht unter strenger Aufsicht und entspricht der Norm NEN-EN 7089. Alle verchromten Teile der Casala-Möbel sind mit Chrom III versehen. Chrom III ist, im Gegensatz zu Chrom VI, eine gesunde und ökologisch sinnvolle Wahl. Das verwendete Chrom III erfüllt die strengsten Anforderungen der REACH- und CSR-Richtlinien.

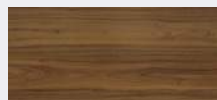
FR Les parties métalliques chromées de nos meubles ne contiennent aucun composé de chrome VI. Le processus de chromage s'effectue sous contrôle strict. Le processus de production répond à la norme NEN-EN 7089. Toutes les pièces chromées du mobilier Casala sont réalisées avec du chrome III. Contrairement au chrome VI, il s'agit d'un choix responsable en termes de santé et d'écologie. Le chrome III utilisé respecte les prescriptions REACH et RSE les plus strictes.

TABLETOPS

HPL & MELAMINE



White U11026*
Structure: VV
Brand: Pfeleiderer
Reflection value: 0,88
Matching Laser edge



Madison Walnut R30011
Structure: NW
Brand: Pfeleiderer
Reflection value: 0,16
Matching Laser edge



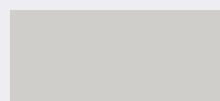
Talinn Beech R24053*
Structure: NW
Brand: Pfeleiderer
Reflection value: 0,59
Matching Laser edge



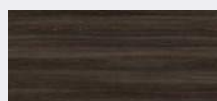
Salisbury Elm grey R37017
Structure: NW
Brand: Pfeleiderer
Reflection value: 0,19
Matching Laser edge



Solid Oak
Thickness: 30mm
Edge : M
Finish: transparent matt lacquered or stained in standard Casala colours



Light grey U12188*
Structure: SD
Brand: Pfeleiderer
Reflection value: 0,28
Matching Laser edge



Dark Mountain Oak R20065
Structure: NW
Brand: Pfeleiderer
Reflection value: 0,1
Matching Laser edge



Platinum Grey U12115*
Structure: SD
Brand: Pfeleiderer
Reflection value: 0,28
Matching Laser edge



Anthracite U12290*
Structure: SD
Brand: Pfeleiderer
Reflection value: 0,16
Matching Laser edge



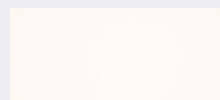
Chestnut R38000
Structure: NW
Brand: Pfeleiderer
Reflection value: 0,13
Matching Laser edge



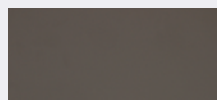
Lindberg Oak R20021**
Structure: NW
Brand: Pfeleiderer
Reflection value: 0,45
Matching Laser edge

*Also available in SCL
**No matching stain available

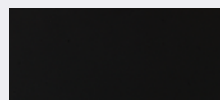
FENIX NTM*



Bianco Male 0029*
Brand: Fenix NTM
Matching Laser edge



Grigio Londra 0718*
Brand: Fenix NTM
Matching Laser edge



Nero Ingo 0720*
Brand: Fenix NTM
Matching Laser edge

*Fenix NTM available against upcharge

SOLID TABLETOPS (METRO TABLE)

SAMPLE SERVICE

The colours in this publication may differ to the original product. We recommend requesting a product sample.

Table edges

As a Standard all Casala tops are manufactured with Döllken Fusion edges enabling a glue-line free narrow surface coating. The functional layer (2 mm ABS) is applied to the panel using a high performance laser or hot air system and bonds to the board during processing via an invisible adhesion joint. Compared to conventional gluing, joint tightness and water and moisture resistance are better, thanks to the union of edgeband and board.

Tabletop shapes



Linked table tops in configurations are not supplied with a continuous decor as standard. Continuous decor is possible, price on request.

TABLETOPS

PRACTICAL INFO

UK The standard Casala tabletop collection consists of 13 standard colours divided between melamine & HPL and Fenix NTM. With melamine & HPL there is a choice of 1 x finish with smooth structure (VV), 3 x solid colours (SD) and 6 x wood finishes with grain structure (NW). The melamine and HPL options are produced by Pfleiderer and are carefully selected from the Duropal, Wodego and Thermopal collections.

With Fenix NTM, there is a choice of 3 matt structures. The Fenix NTM properties not only provide a soft feel matt surface, but also hides fingerprints and allows small superficial scratches to repair themselves.

SCL is standard available in the colour white. If you are interested in another uni or wood decor please ask for a quotation. Please contact Casala sales support.

Casala is certified according to international quality marks PEFC™ or FSC®. These quality marks guarantee all wood- or wood based products, in our table tops, are originated from sustainably managed forests. Ask for our PEFC™ and FSC® certified products.

NL De standaard Casala tafelbladen collectie bestaat uit 13 kleuren verdeeld over melamine & HPL en Fenix NTM. Bij melamine & HPL is er keuze uit 1 x decor met gladde structuur (VV), 3x uni decor (SD) en 6x hout decor met nerfstructuur (NW). Melamine & HPL kwaliteiten worden geproduceerd door Pfleiderer en zijn zorgvuldig geselecteerd uit de Duropal, Wodego en Thermopal collecties.

Bij Fenix NTM is er keuze uit 3 matte structuren. De Fenix NTM kwaliteiten zorgen voor een mat oppervlak, voelen zacht aan, tonen geen vingerafdrukken en kleine oppervlakkige krasjes herstellen vanzelf.

SCL wordt standaard aangeboden in de kleur wit. Wanneer u een andere uni of houtkleur wenst maken wij graag voor u een offerte. Neem dan alstublieft contact op met de Casala binnendienst.

Casala is gecertificeerd volgens de internationale keurmerken PEFC™ of FSC®. Deze keurmerken garanderen dat de verwerkte hout- en houtgerelateerde producten in onze tafelbladen afkomstig zijn uit verantwoord beheerde bossen. Vraag naar onze PEFC™ en FSC® gecertificeerde producten.

DE Die Standard-Casala-Tischplattenkollektion besteht aus 13 Standardfarben, aufgeteilt in Melamin & HPL und Fenix NTM. Bei Melamin & HPL stehen 1x Dekor mit glatter Struktur (VV), 3x Unidekore (SD) und 6x Holzdekore mit Maserung (NW) zur Auswahl. Die Melamin- und HPL-Optionen werden von Pfleiderer produziert und sind sorgfältig aus den Kollektionen Duropal, Wodego und Thermopal ausgewählt.

Bei Fenix NTM gibt es 3 matte Strukturen zur Auswahl. Die Fenix NTM-Qualitäten bieten eine matte Oberfläche, fühlen sich weich an, zeigen keine Fingerabdrücke und kleine, oberflächliche Kratzer reparieren sich von selbst.

Platten in SCL sind in der Farbe Weiß. Lagerware. Ausführungen außerhalb der Preisliste erfragen Sie bitte über den Casala Innendienst.

Casala ist nach den internationalen Qualitätsmarken PEFC™ oder FSC® zertifiziert. Diese Gütezeichen stellen sicher, dass die verarbeiteten Hölzer und holzverwandten Produkte aus verantwortungsvoll bewirtschafteten Wäldern stammen. Fragen Sie nach unseren PEFC™- und FSC®-zertifizierten Produkten.

FR La collection de plateaux de Casala comprend 13 coloris standards en mélamine, HPL et Fenix NTM. La Mélamine et le HPL offrent le choix entre 1 décor à finition lisse (VV), 3 décors unis (SD) et 6 décors bois texturés (NW). Tous ces revêtements sont fabriqués par Pfleiderer et soigneusement sélectionnés parmi les collections Duropal, Wodego et Thermopal.

Le revêtement Fenix NTM est proposé en 3 finitions mates. Les revêtements Fenix NTM offrent une surface mate au toucher doux, sur laquelle les traces de doigts n'apparaissent pas et les petites rayures superficielles se réparent d'elles-mêmes.

Le SCL est disponible en blanc en standard. Si vous êtes intéressés par un autre décor uni ou bois, veuillez demander un devis. Merci de contacter le service commercial Casala.

Casala est certifiée par les standards internationaux PEFC™ au FSC®. Ces labels de qualité garantissent que le bois et les produits dérivés du bois utilisés sont essentiellement issus de forêts gérées durablement. Renseignez-vous sur nos produits certifiés PEFC™ et FSC®.

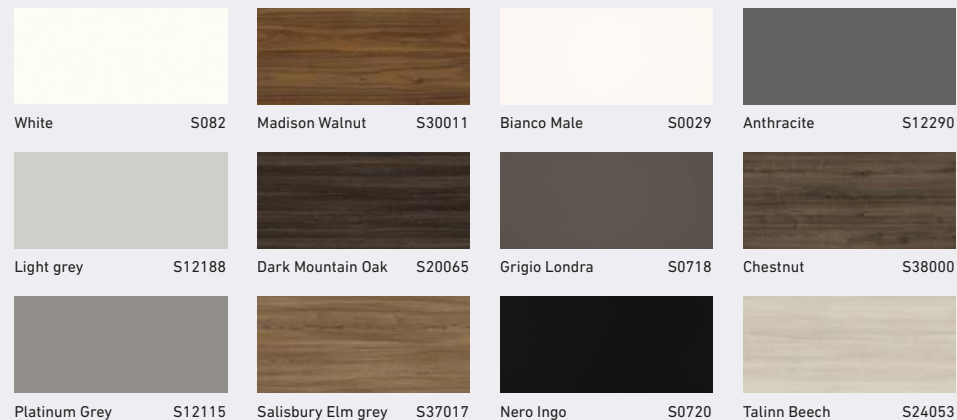
SAMPLE SERVICE

The colours in this publication may differ to the original product. We recommend requesting a product sample.

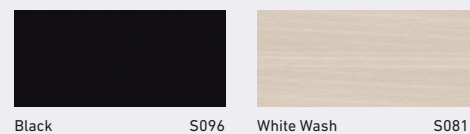


STAINING & VENEERS

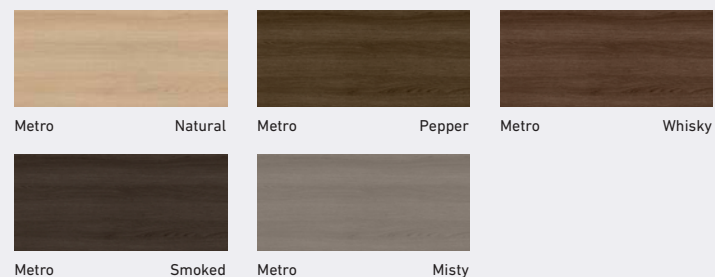
STAINING COLOURS WITH MATCHING HPL TABLE TOPS*



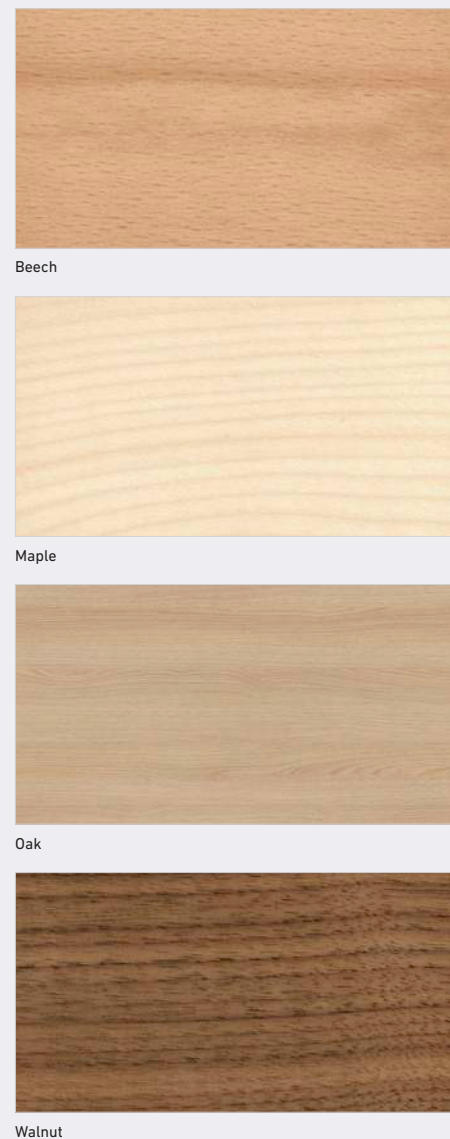
STAINING COLOURS*



STAINING COLOURS METRO TABLE SOLID OAK*



VENEERS*



SAMPLE SERVICE

The colours in this publication may differ to the original product. We recommend requesting a product sample.

*Stain & veneer colours are finished as standard with transparent lacquer S084

STAINING & VENEERS

PRACTICAL INFO

UK Stain colours that are not standard to the Casala collection can be used at the customer's request. An additional fee of £ 205,- NET per colour, will be calculated. When the colour is received, a sample will be produced, which will be sent to the client for approval. The lead time starts after approval of the sample. This will be available in approx. 2 weeks.

Wood is a natural material with inherent colour and texture differences. For this reason, an exact match of the submitted samples cannot be guaranteed on the furniture. Also, as the wooden parts have constant exposure to light, the colour is subject to change. For this reason possible colour variations may occur on back orders.

Our wooden products are treated with water based lacquer and stains. No poisonous fumes are released during processing, therefore the lacquers are less harmful to both people and the environment. Wooden products can be treated with an optional fire retardant lacquer. When treated, the products are in accordance with European fire safety guidelines.

NL Beitskleuren welke niet zijn opgenomen in de standaard Casala collectie zijn op aanvraag. Beitsen naar staal heeft een meerprijs van € 205,- netto per beitskleur, per order. Na ontvangst van de kleurstaal wordt een proefstaal vervaardigd, deze wordt de opdrachtgever toegezonden ter goedkeuring. De levertijd gaat in na goedkeuring van de proefstaal, deze is in ca. 2 weken beschikbaar.

Hout is een natuurlijk materiaal. Inherent hieraan zijn kleur- en structuurverschillen. Om deze reden kan een exacte match van aangeleverde monsters op de meubels niet worden gegarandeerd. Tevens zijn de houten onderdelen door constante blootstelling aan het licht onderhevig aan kleurverandering, zodat in naleveringen mogelijk kleurverschillen ontstaan.

De houtlakken en beitsen, waarmee houtproducten worden behandeld, zijn op waterbasis. Tijdens het bewerkingsproces komen geen giftige dampen vrij. Deze lakken zijn minder schadelijk voor mens en milieu. Indien gewenst kunnen de houten onderdelen voorzien worden van een brandwerende lak. Hiermee voldoet het product aan de eisen die worden gesteld aan brandveiligheid.

DE Beitzfarben, die nicht in unserer Standardkollektion enthalten sind, sind auf Anfrage gegen Mehrpreis möglich. Für einen Sonder-Beitzfarbton berechnen wir je Auftrag und Farbprobe einen Mehrpreis von netto 205,- €. Nach Empfang Ihrer Farbprobe wird eine Gegenprobe angefertigt, die Ihnen zur Abnahme zugeschickt wird. Die Lieferzeit eines Auftrages nach Farbprobe kann erst gerechnet werden ab Genehmigung der Gegenprobe. Eine Gegenprobe wird innerhalb von ca. 2 Wochen nach Empfang zur Verfügung gestellt.

Holz ist ein natürlicher Werkstoff, der naturgegebenen Unterschieden in Farbe und Struktur unterliegt. Aus diesem Grunde kann eine genaue Übereinstimmung von Mustern mit zu liefernden Möbeln nicht garantiert werden. Ebenso verändert sich der Farbton von Holzoberflächen durch ständige Lichteinwirkung, so dass bei Nachlieferungen farbunterschiede auftreten können.

Die Lacke und Beizen, mit denen unsere Holzprodukte behandelt werden, sind auf Wasserbasis. Bei der Verarbeitung dieser Farben werden keine giftigen Dämpfe freigesetzt. Diese Lacke sind also weniger schädlich für Mensch und Umwelt. Falls gewünscht, können die Holzgestelle mit einem feuerhemmenden Lack bearbeitet werden, damit Brandschutzaufgaben erfüllt werden.

FR Les couleurs de vernis qui ne sont pas mentionnées dans la collection standard de Casala peuvent être commandées sur demande. Les vernis d'après acier font l'objet d'un supplément de 205 euros par couleur de vernis. Après réception de l'échantillon de couleur, nous vous faisons parvenir un essai pour accord. Le délai de livraison prend date à partir du moment où vous avez donné votre accord. Pour un essai, il faut compter environ deux semaines.

Le bois est un matériau naturel avec une couleur intrinsèque et des différences de texture. C'est pourquoi nous ne pouvons garantir que les échantillons fournis soient parfaitement identiques aux meubles. Par ailleurs, la couleur des parties en bois constamment exposées à la lumière du soleil est susceptible de changer. Il peut en résulter des différences de couleurs avec les commandes ultérieures.

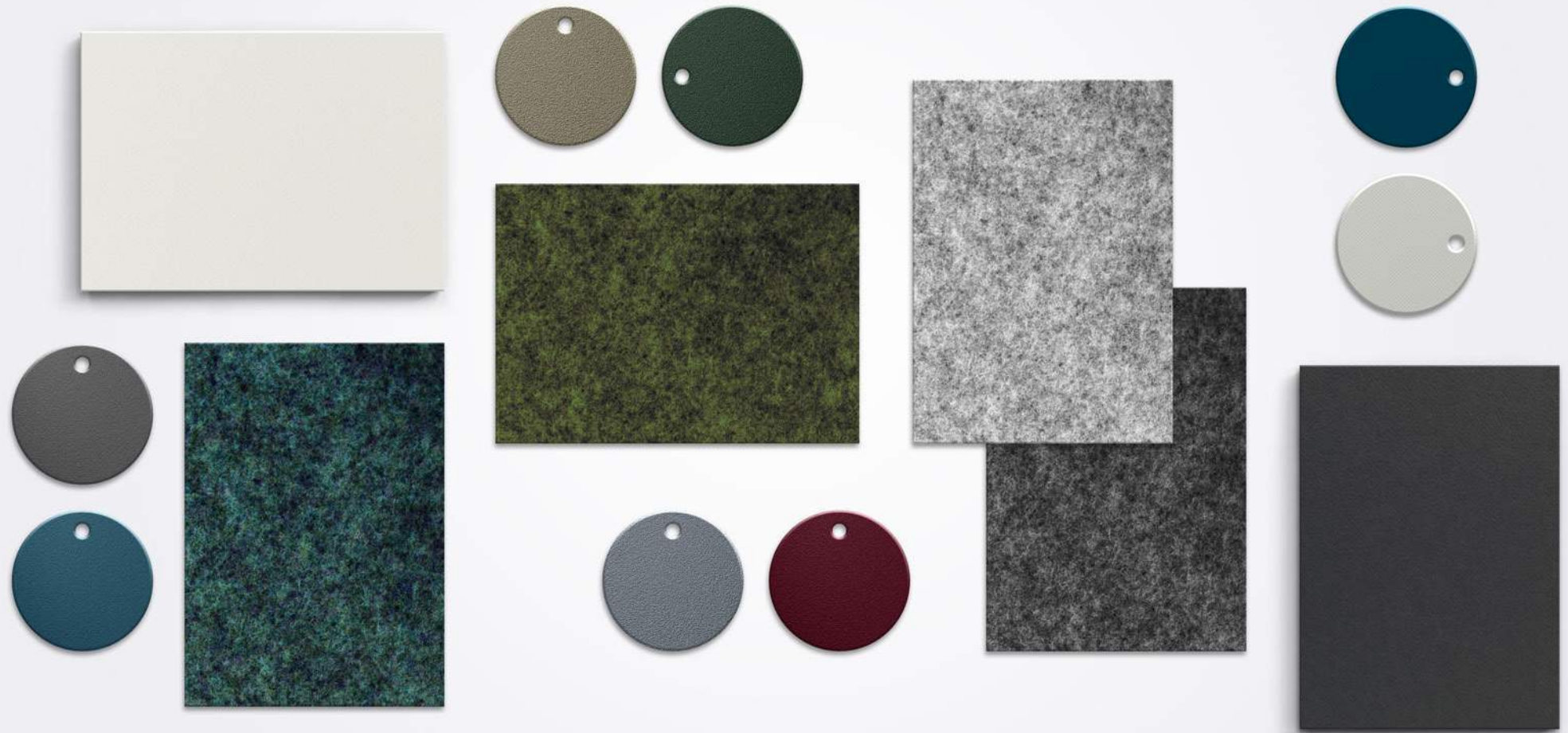
Les laques et les vernis que nous utilisons pour traiter nos produits en bois sont à base d'eau. Aucune vapeur toxique n'est rejetée lors de la fabrication, ce qui est meilleur pour l'homme et pour l'environnement. Si vous le souhaitez, les bois peuvent être traités avec une vernis ignifuge. Ainsi, le produit fini répond aux exigences de sécurité anti-incendie.

SAMPLE SERVICE

The colours in this publication may differ to the original product. We recommend requesting a product sample.

PLASTICS & FELT

COLLECTION



casala

Quality materials united for stylish interior concepts

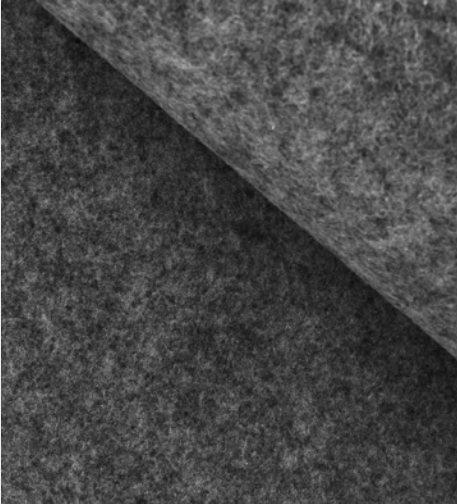
Casala's materials and finishes combine a harmonious blend of colours and patterns ensuring they both complement and integrate effortlessly with each interior concept for professional and public spaces. In today's world, the choice of materials is not just about design and functionality, but also about the broader impact on our environment. Our materials contain a high percentage of recycled content and meet various standard certifications. We are continuously looking for innovative and sustainable materials and production techniques, while maintaining commitment to quality, sustainability and our philosophy "Design Linked to Functionality".



casala

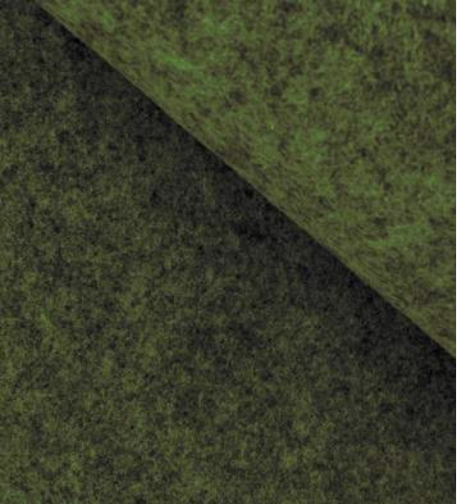
FELT

OMEGA CHAIR



Anthracite
100% recycled PET

F01



Moss green
50% recycled PET

F05



Light grey
100% recycled PET

F02



Sandstorm
50% recycled PET

F06



Aquamarine blue
50% recycled PET

F04



Sapphire blue
50% recycled PET

F03

SAMPLE SERVICE

The colours in this publication may differ to the original product. We recommend requesting a product sample.

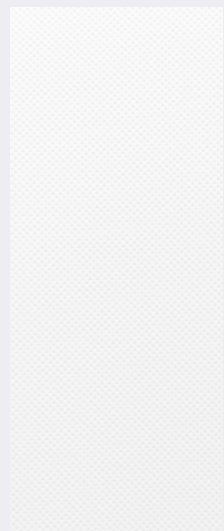
AXA PLASTICS

SAMPLE SERVICE

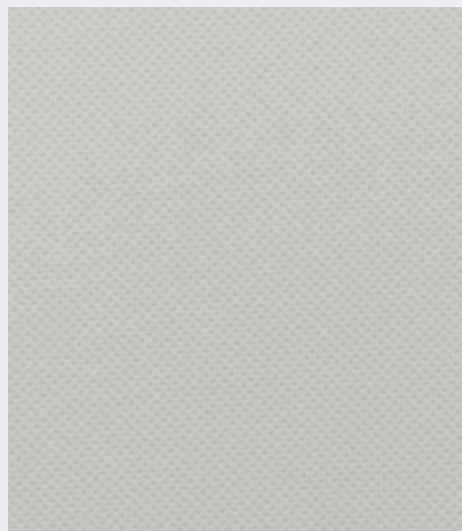
The colours in this publication may differ to the original product. We recommend requesting a product sample.

COLOUR CODES

	PMS	RAL	RGB	CMYK
White	-	9003	255/255/255	0/0/0/0
Sand	413	7044	212/213/206	9/5/12/14
Lemon grass	583C	-	193/198/0	26/1/100/10
Petrol	3035	5020	00/60/80	80/00/00/80
Graphite	5467C	7016	28/50/56	60/30/30/80
Black	Process Black	9005	24/24/26	74/68/64/78



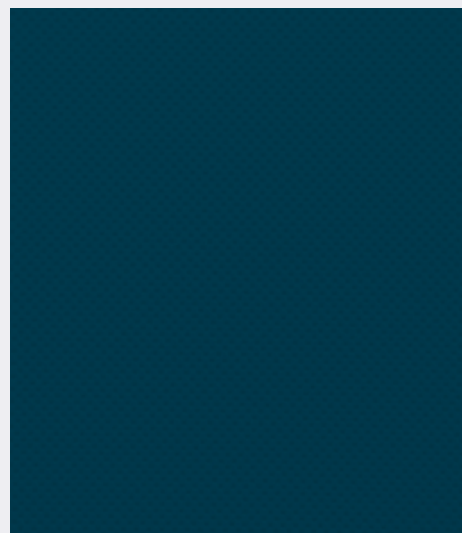
White A02



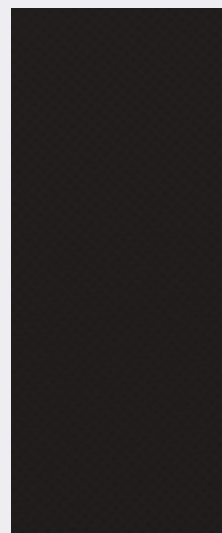
Sand A06



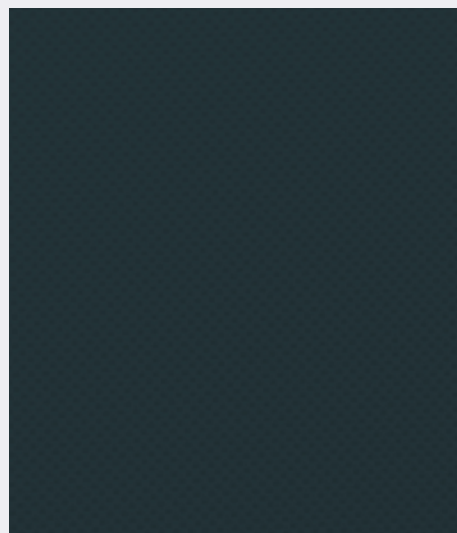
Lemon grass A04



Petrol A05



Black A01



Graphite A03

CURVY FAMILY PLASTICS

CARVER, CELLO, COBRA, CURVY



SAMPLE SERVICE

The colours in this publication may differ to the original product. We recommend requesting a product sample.

COLOUR CODES

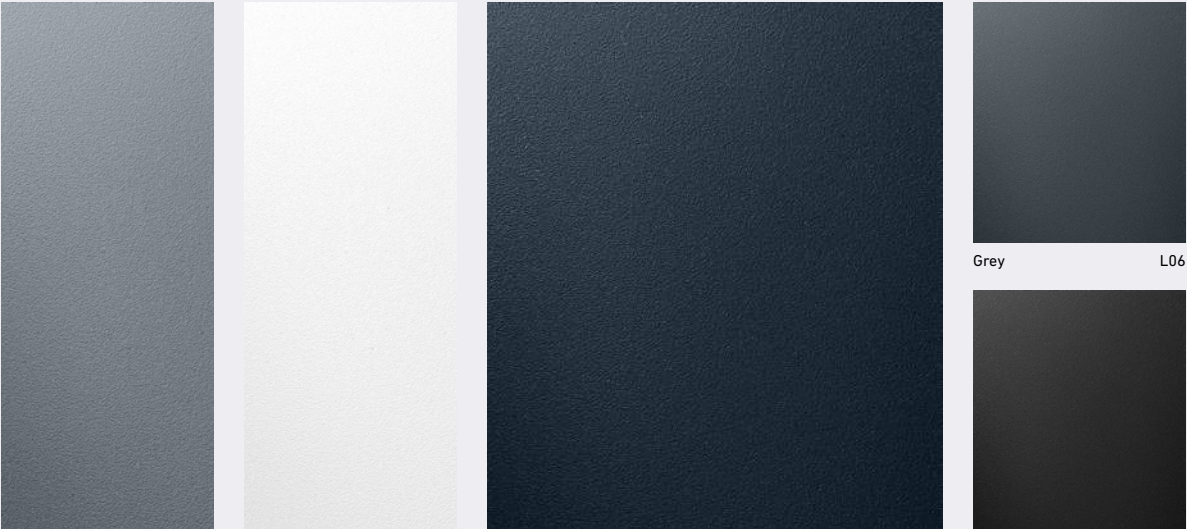
	PMS	NCS S	RAL	Sikkens	RGB	CMYK
Clear white	-	S 0500N	9003	-	255/255/255	0/0/0/0
Brick	7584C	-	-	D6.60.40	180/83/34	0/70/90/30
Tomato	7597C	S 0585-Y80R	-	-	238/45/43	0/96/93/0
Azur blue	7703C	-	-	R0.40.50	18/157/192	72/9/9/13
Sky blue	3041C	-	-	Q0.29.65	148/216/ 233	39/0/7/0
Apple green	368C	S 0580-G30Y	-	-	114/191/68	60/0/100/0
Lime green	381C	-	-	G9.56.76	196/216/46	28/0/100/0
Violet	525C	S 5040-R50B	-	-	87/50/117	64/84/0/32
Black	Pro. black	-	9005	-	24/24/26	74/68/64/78
Grey	424C	-	7012	-	97/106/108	63/49/49/18
Graphite	5467C	-	7016	-	28/50/56	60/30/30/80
Crème white	-	-	9001	-	242/238/230	4/4/8/0
Sand	413	-	7044	-	212/213/206	9/5/12/14
Petrol	3035	-	5020	-	14/61/79	95/62/46/44
Orange	166	-	2004	-	239/121/0	0/62/100/0

	PMS	NCS S	RAL	Sikkens	RGB	CMYK
Ocean Blue	-	-	-	-	0/61/86	100/67/42/37
Forest Green	-	-	-	-	55/73/58	77/52/72/46
Stone Grey	-	-	-	-	79/76/73	60/52/53/50
Lava Black	-	-	9005	-	29/29/27	0/0 /0/100

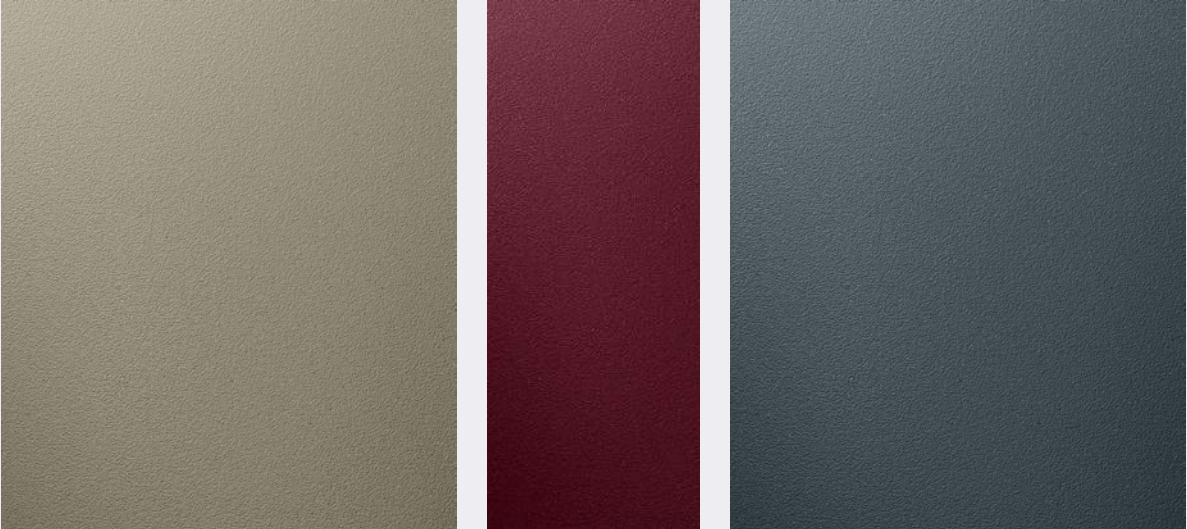
CIRCULAR COLOURS (100% RECYCLED HOUSEHOLD WASTE)



LYNX & ONYX PLASTICS



Light grey L07 White L02 Blue L04 Black L01



Beige L03 Fuchsia L05 Soft Petrol L10

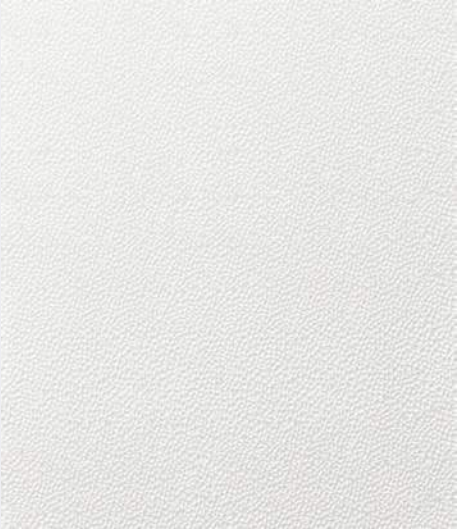
SAMPLE SERVICE

The colours in this publication may differ to the original product. We recommend requesting a product sample.

COLOUR CODES

	PMS	NCS S	RAL	Sikkens	RGB	CMYK
White	-	-	9003	-	255/255/255	0/0/0/0
Light Grey	-	5010-R90B	-	-	109/123/134	19/8/0/47
Grey	432U	-	-	-	75/87/95	71/56/49/27
Black	Black	-	-	-	24/24/26	74/68/64/78
Blue	2767C	-	-	T6.30.10	0/50/ 89	100/55/10/60
Soft petrol	-	7010-B10G	-	-	61/80/87	30/8/0/66
Beige	-	5010-G90Y	-	-	136/129/107	0/5/21/47
Fuchsia	-	4050-R20B	-	-	126/29/64	0/77/49/51

MONOLINK PLASTICS



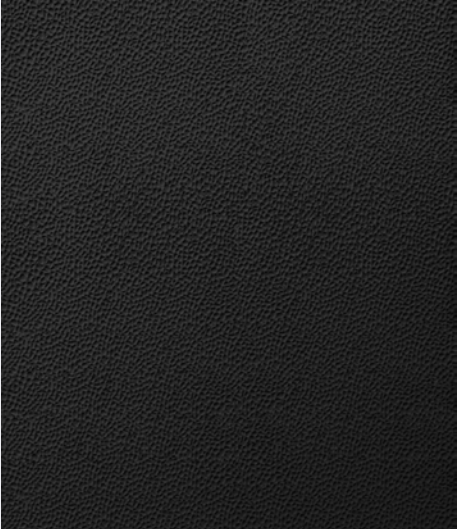
White seat & frame

M02



Grey seat & frame

M03



Black seat & frame

M01

SAMPLE SERVICE

The colours in this publication may differ to the original product. We recommend requesting a product sample.

COLOUR CODES

	PMS	NCS S	RAL	Sikkens	RGB	CMYK
White	-	-	9003	-	236/236/231	9/6/9/0
Grey	431	-	7011	-	81/93/104	45/25/16/61
Black	Black	-	9005	-	24/24/26	74/68/64/78

COOPER PLASTICS

SAMPLE SERVICE

The colours in this publication may differ to the original product. We recommend requesting a product sample.



Antracite

C4



Sand

C5



Black

C1



White

C2



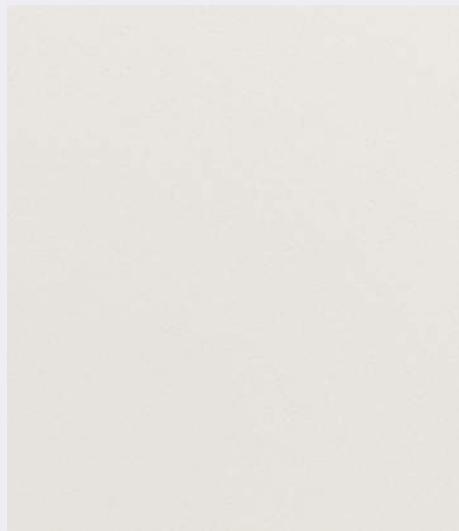
Dark blue

C3

NOA MELAMINE

SAMPLE SERVICE

The colours in this publication may differ to the original product.
We recommend requesting a product sample.



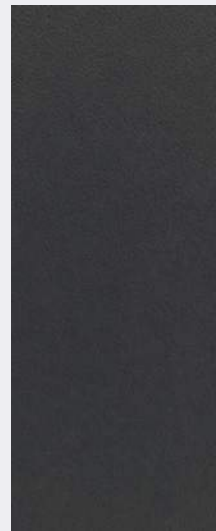
White

M1



Wenge

M9



Antracite

M2



Black

M3



Lemon

M4



Red

M6